

# Leica Cyclone REGISTER 360

## The power of Cyclone, simplified



Leica Cyclone REGISTER 360 borrows from the simplicity of the Leica BLK360 while maintaining the scalability of the ScanStation P-Series laser scanners to deliver a simple yet robust point cloud registration solution.

### FOR NOVICE AND EXPERT ALIKE

Cyclone REGISTER 360 empowers users of any skill-level to work smarter, deliver results more accurately, visualise in more detail and collaborate more effectively - placing the user at the centre of their projects.

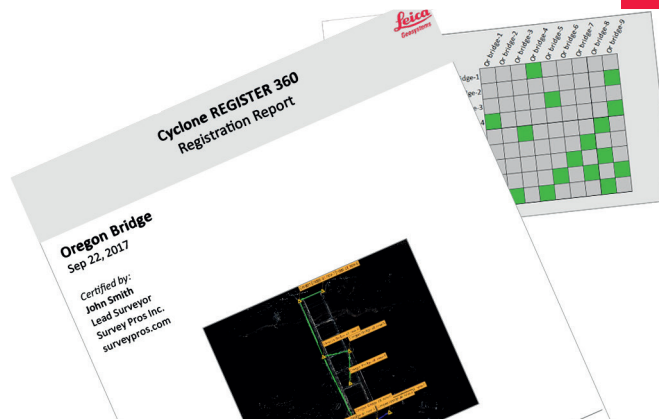
Whether deployed as a stand-alone solution or as part of an end-to-end integrated laser scanning solution, Cyclone REGISTER 360 is your fastest and easiest option to get the job done right, the first time. It is available for all Cyclone REGISTER customers with active maintenance, or as a stand alone product.

leica-geosystems.com



- when it has to be **right**

**Leica**  
Geosystems



#### Link Error Results

##### 1 Overview

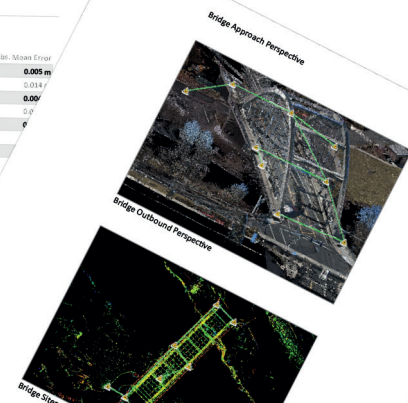
Link Name	Setup 1	Setup 2	Overlap	Abs. Mean Error
Link 2	Oregon Bridge all new-2	Oregon Bridge all new-9	37 %	0.005 m
Link 5	Oregon Bridge all new-3	Oregon Bridge all new-5	2 %	0.014 m
Link 6	Oregon Bridge all new-6	Oregon Bridge all new-8	35 %	0.007 m
Link 7	Oregon Bridge all new-7	Oregon Bridge all new-8	16 %	0.017 m
Link 8	Oregon Bridge all new-8	Oregon Bridge all new-9	21 %	0.011 m
Link 9	Oregon Bridge all new-1	Oregon Bridge all new-4	0 %	0.011 m
Link 10	Oregon Bridge all new-1	Oregon Bridge all new-4	0 %	0.011 m

##### 2 Details

Link Name	Setup 1	Setup 2	Overlap
Link 2	Oregon Bridge all new-2	Oregon Bridge all new-9	37 %
		Cloud to Cloud Target	Mean Target

Link Name	Setup 1	Setup 2	Overlap
Link 3	Oregon Bridge all new-3	Oregon Bridge all new-5	2 %
		Cloud to Cloud Target	Mean Target

Link Name: Oregon Bridge all new-2



## Speed

- Drag-Drop-Done: load and process scans from most terrestrial sensors in one simple step, delivering higher productivity.
- Automatic registration delivers a complete registration for most projects. Users can fine-tune their results per project needs.
- SmartAlign tool at import improves auto-alignment speed.
- Visual Alignment allows the user to quickly align setup positions. Then run a quick optimisation to create new links throughout the bundle.
- TruSlicer tool speeds the process of best-practice validation through visual checks.

## Scale

- Easily manage projects ranging from a handful to hundreds of scans with ease.
- Batch export and "Publish" your data directly as a client-ready registration report, or TruView data for local, network or web consumption. Even publish to JetStream, and/or as an E57, PTX, PTG or PTS with the click of a button for easy sharing in-office and beyond.

## Simplicity

- All-new easy-to-understand reporting includes all the information you and your customers need to make decisions.
- Guided workflows to assist new users and streamlined-yet-powerful interface.
- Quality control built into the heart of the product – deliver professional results without the need for professional training.
- Visualise the strength and quality of your registration to minimise errors and improve accuracy.
- Validation of point cloud registration.
- Version Manager to track your registration edits.

## ULTIMATE SPEED

From project creation to final reporting, many projects take just minutes thanks to multi-threaded batch routines and automated registration.

## PROFESSIONAL GRADE SCALE

Cyclone REGISTER 360 handles even the most complex of projects with ease and takes the headache out of large project registration.

## SIMPLE, ONE-STEP IMPORT AND PROCESSING

Cyclone REGISTER 360 introduces the first drag-and-drop data import process which accepts data from most terrestrial sensors. Cyclone REGISTER 360 is also compatible with the BLK360 Data Manager or BLK360 WiFi import.

## PROFESSIONAL REGISTRATION REPORTING

Deliver professional-level deliverables with ease. Cyclone REGISTER 360 delivers a detailed registration report with SiteMaps, TruSlices, quality matrix, absolute mean error for each bundle and link, and a robust selection of graphics dictated by you in a thoughtfully-designed package.

## POWERFUL QA/QC

Improved Visual Alignment tool, new TruSlicer mode and link inspection tools give you total control over your project in a highly visual way. Paired with detailed link quality matrixes and easy methods to optimise your alignments, you can ensure you are delivering statistically accurate results validated by you.

Copyright Leica Geosystems AG, 9435 Heerbrugg, Switzerland. All rights reserved. Printed in Switzerland – 2017. Leica Geosystems AG is part of Hexagon AB. 865475en - 11.17



Leica Cyclone Cloud Flyer



Leica TruView Cloud Flyer



Leica CloudWorX Ultimate Data Sheet

**Leica Geosystems AG**  
Heinrich-Wild-Strasse  
9435 Heerbrugg, Switzerland  
+41 71 727 31 31

- when it has to be **right**

**Leica**  
Geosystems