

NEW

RiPANO

RiPANO is a software for fast and easy visualization of terrestrial laser scan projects.

The data is loaded into 360° panorama images for intuitive navigation even through complex environments.

The software runs plugin-free in a browser on any Windows, Mac, Android or iOS device.



RIEGL Software for Terrestrial Scan Data Visualization

Explore 360° Panorama Views in your Browser



www.riegl.com



RIEGL LMS GmbH, Austria

RIEGL USA Inc.

RIEGL Japan Ltd.

RIEGL China Ltd.

Create

To create a RiPANO project you have the possibility to:

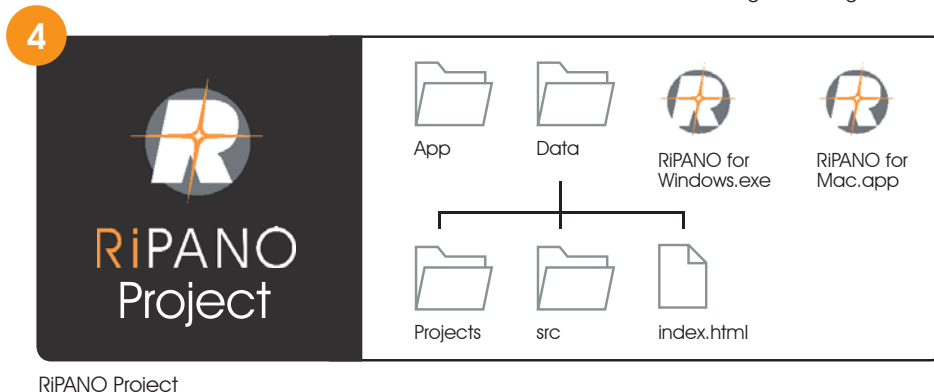
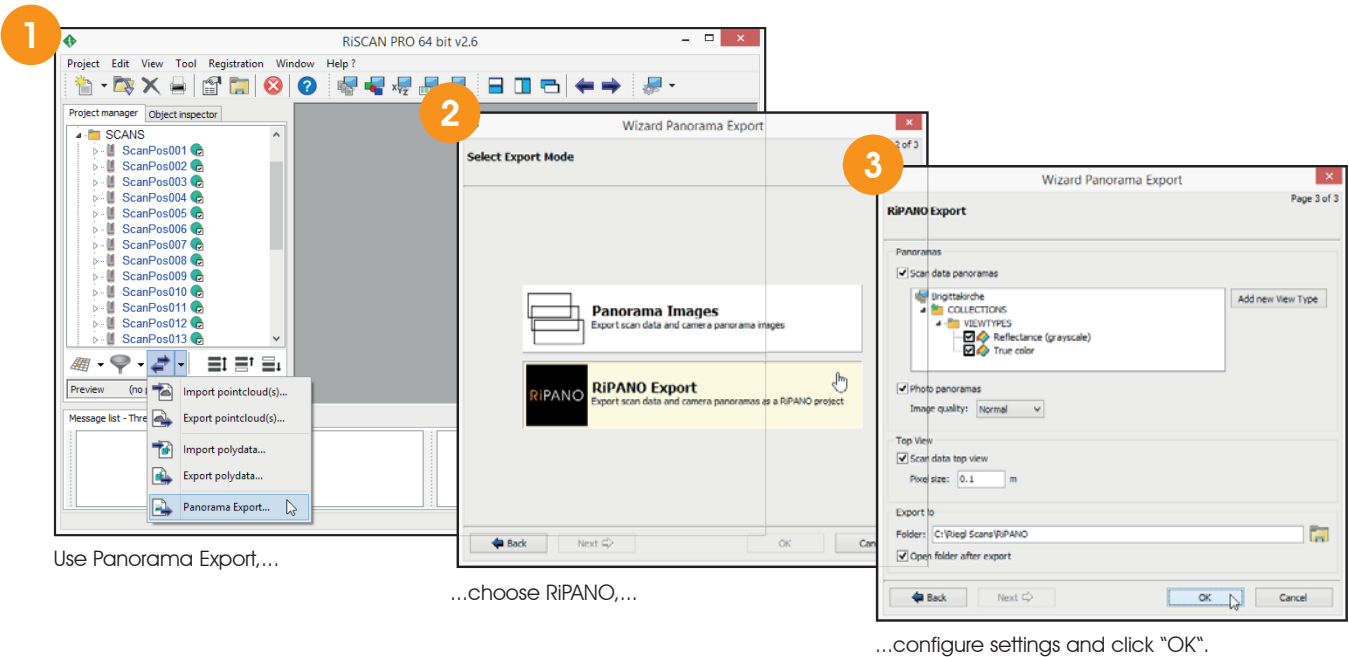
- **Acquire a new project:** Acquire a new scan project, e.g. with the *RIEGL VZ-400i**, include images if desired and use the automatic on-board registration. Import the project in RiSCAN PRO, RiSOLVE or RiMINING. Register the project, if it was not already registered by the scanner's automatic on-board registration, colorize your point cloud and create RiPANO projects straight out of RiSCAN PRO, RiSOLVE or RiMINING. For doing so, use the built-in exporter to create the panoramas, the HTML page, and an out-of-the-box server.



*For an optimum presentation of your project with RiPANO, we recommend to use a full field-of-view (FOV) scan pattern, e.g. PanoramaXX, which uses a horizontal FOV of 360° and a vertical FOV of 100°.

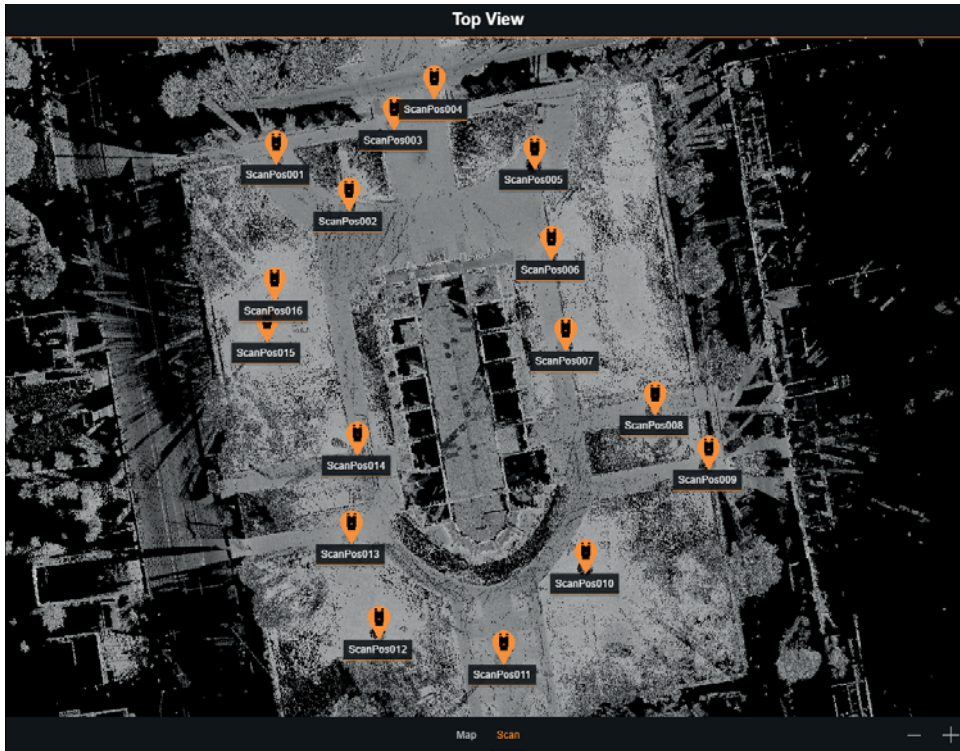


- **Export any existing projects for RiPANO:** You can create a RiPANO project in RiSCAN PRO, RiSOLVE or RiMINING for any scan project acquired with a VZ-Line Scanner in the past.



Explore

- Exploring the project is easy by clicking on a scan position marker on the **Top View map** or within the **Panorama View**.

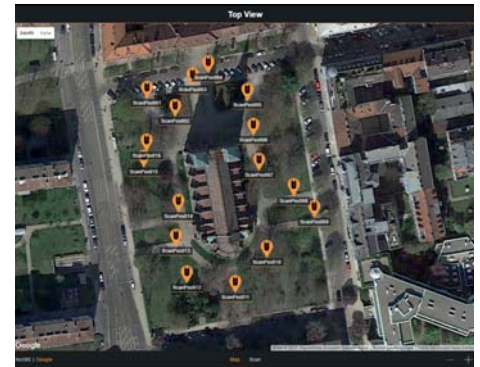


Top View: Reflectance (grayscale)

Zoom into the scan Top View to check for scan data coverage of the project area and identify scan shadows.

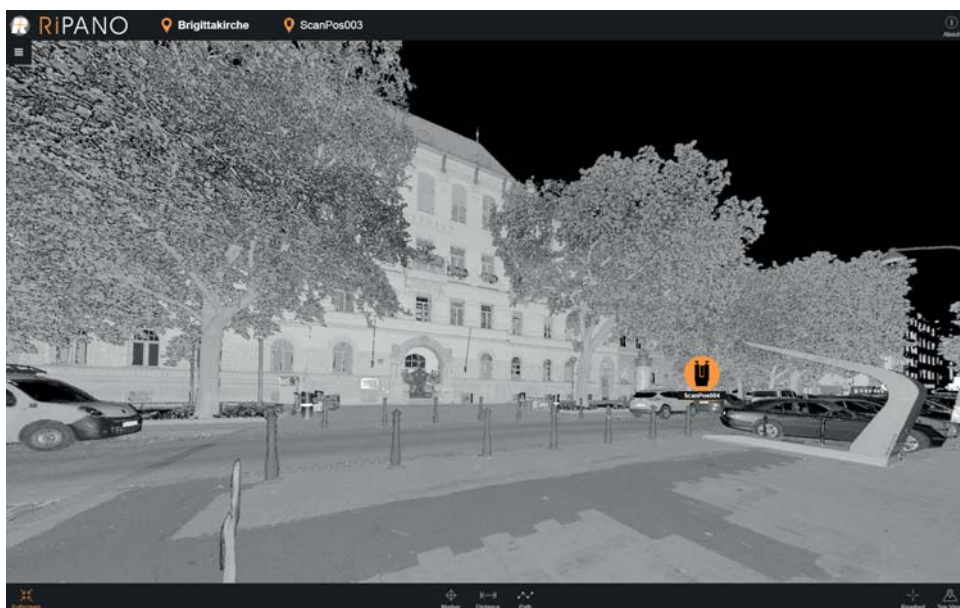


Top View: Google map



Top View: Google satellite map

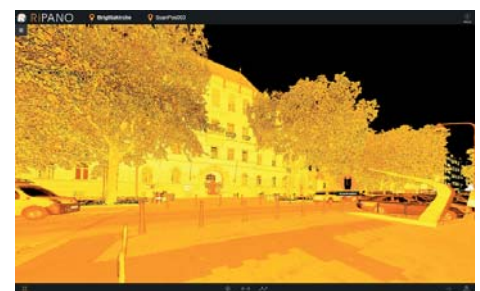
- Switch between different visualizations:** Reflectance (grayscale), True Color, Camera, or any user-defined viewtype exported from RiSCAN PRO, RiSOLVE, or RiMINING.



Panorama View: Reflectance (grayscale)



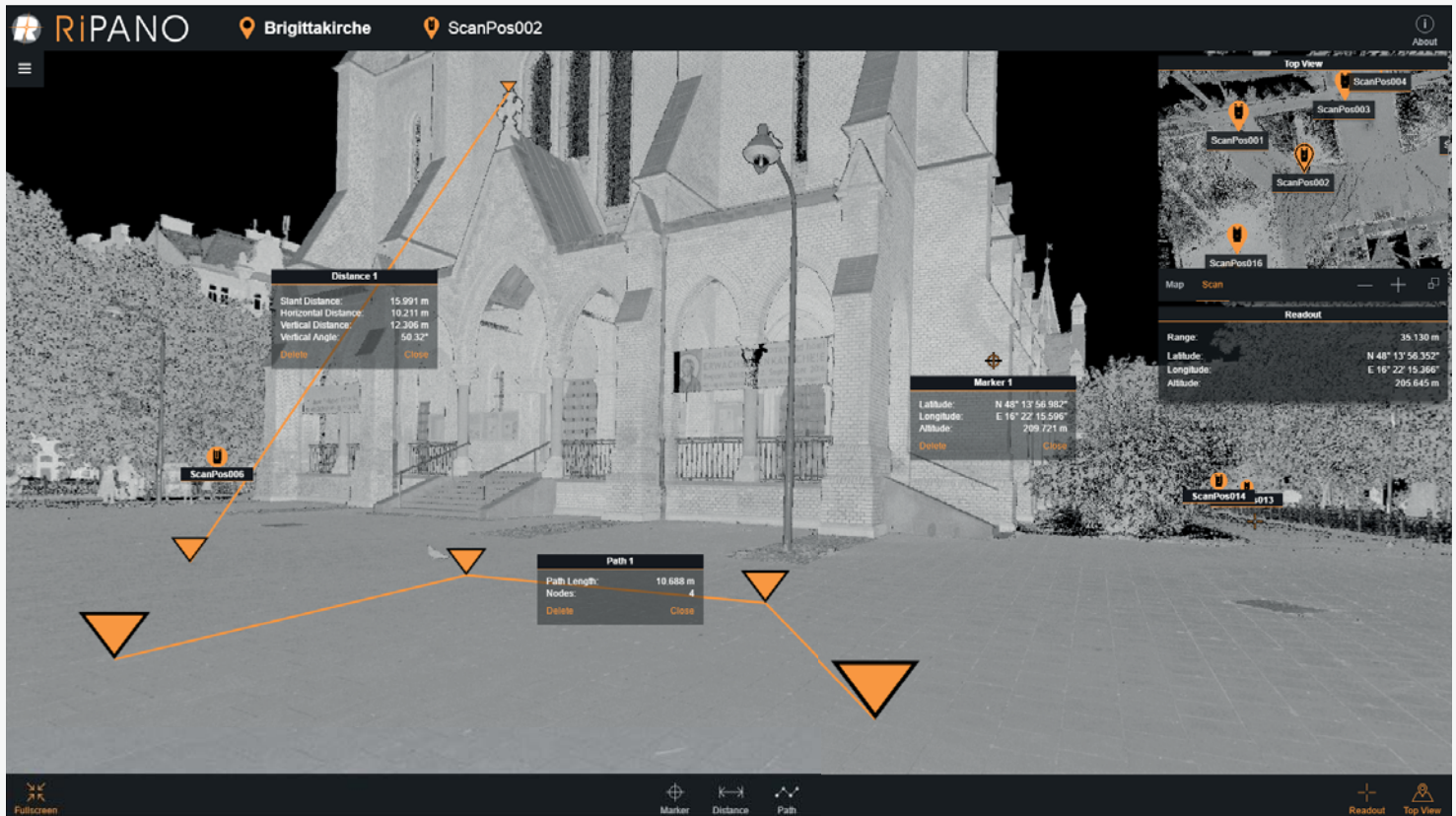
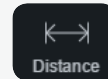
Panorama View: Camera & True Color



Panorama View: Export in your own view type

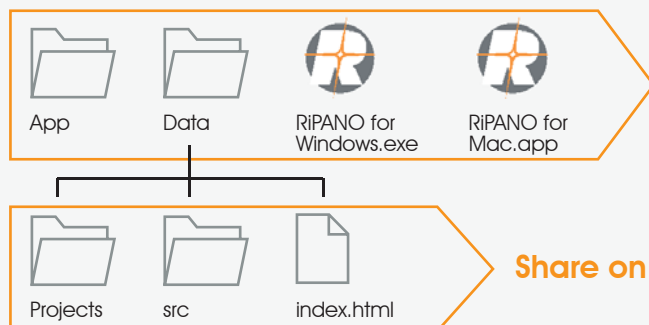
Measure

- Use measurement tools for quick inspection
- Readout coordinates: SOCS, PRCS, GLCS, Lat/Lon/Alt
- Place markers, measure distances and paths



Share

- **Share on the Web:** Upload the Data folder (including the Projects folder, the src folder and the index.html file) to a webserver and RiPANO is ready to be accessed online. Any webspace is sufficient to host a RiPANO project, as there are no special server requirements.
- **Share on Premises:** The RiPANO project includes the data and the software to run the project on a Windows and Mac computer. As there is no need to install any software to view a RiPANO project, it can also be started from USB Flash drive for easy sharing.



Share on Premises

Share on the Web

