

dji ENTERPRISE

<https://enterprise.dji.com>

Follow us @DJIEnterprise



dji ENTERPRISE



ZENMUSE H20 SERIES

Unleash the Power of One

“H” For Hybrid

Multi-sensor payloads that bring a whole new meaning to mission efficiency. The unique intelligence and integrated design provide unprecedented aerial imaging capabilities for a range of commercial drone applications.



12 MP Wide Camera
82.9° DFOV



20 MP Zoom Camera
23× Hybrid Optical Zoom



Radiometric Thermal Camera
640×512 px



Laser Rangefinder 1200 m



IP44 Rating



-20°C to 50°C Operating
Temperature



Active Image Stabilization
and EIS



Night Scene Mode



All the Sensors You Need – In One

Capture everything. Up close or from a distance. In true living color or thermal. An integrated laser rangefinder (LRF) measures the distance to an object at up to 1200 m away. A powerful, integrated payload that unleashes advanced intelligent capabilities for DJI's industrial drone platforms.



H20 – Triple-Sensor Solution

- 20 MP Zoom Camera
- 12 MP Wide Camera
- 1200 m LRF



H20T – Quad-Sensor Solution

- 20 MP Zoom Camera
- 12 MP Wide Camera
- 1200 m LRF
- 640×512 px Radiometric Thermal Camera

Everything in View

- Wide Camera
- Equivalent Focal Length: 24mm
- DFOV: 82.9°
- 12 MP 1/2.3" CMOS Sensor

Closing the Distance

- Powerful Zoom Camera
- 23× Hybrid Optical Zoom
- 200× Max Zoom
- 20 MP 1/1.7" CMOS Sensor
- Video Resolution: 4K/30fps



Precise Distance Data

- Laser Rangefinder
- Range: 3 m – 1200 m
- Accuracy: ± (0.2 m + D×0.15%)

See the Unseen

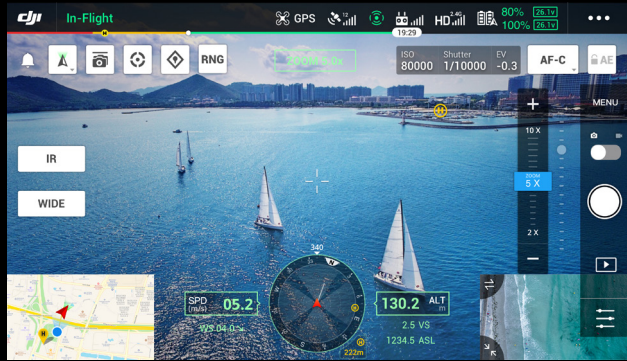
- Radiometric Thermal Camera
- DFOV: 40.6°
- Resolution: 640×512
- Frame Rate: 30fps
- Thermal Sensitivity: ≤ 50mk@f1.0 (NEDT)

The All-In-One



Multi-Sensor Payloads

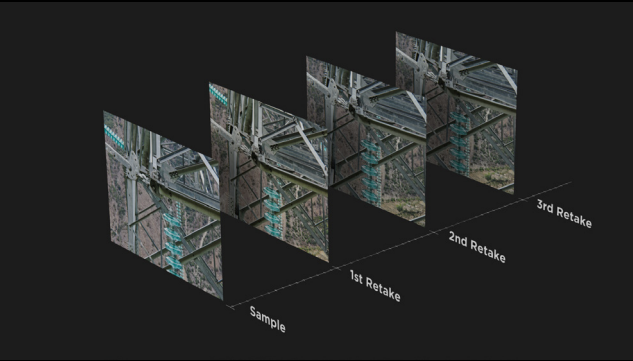
See the full picture without missing any details wherever, whenever your mission takes place.



Seamless User Interface

A new integrated user interface lets you quickly switch between wide, zoom, and thermal camera views, and preview the zoom FOV while in wide or thermal camera view.

Intelligent Ways to Collect Data



AI Spot-Check

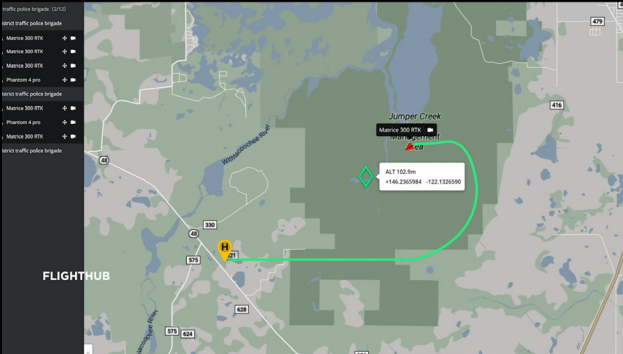
Automate routine inspections and capture consistent results every time. Onboard AI recognizes the pre-marked subject of interest in subsequent automated missions to ensure consistent framing.



High-Res Grid Photo

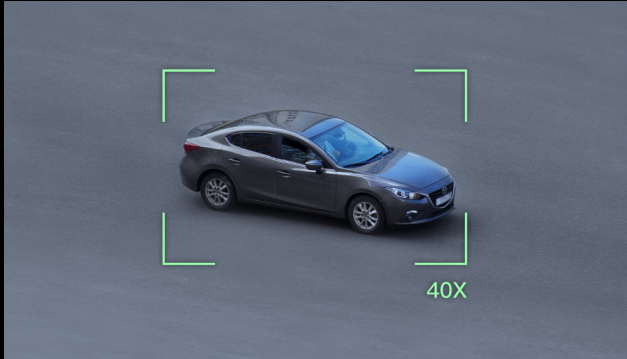
Frame an area of interest in wide camera view, and the zoom camera will automatically capture a set of 20 MP images of the area. These images are stored together with an overview image that can be viewed in greater detail.

Intelligent Ways to Collect Data



PinPoint

A quick tap marks an object in view, advanced sensor fusion algorithms immediately deliver its coordinates.

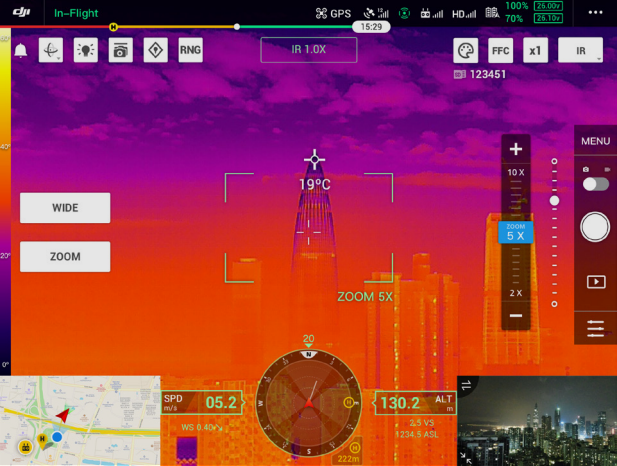


Smart Track

Identify and follow moving subjects like people, vehicles, and boats with the auto-zoom function, while continuously acquiring the subject's dynamic location.

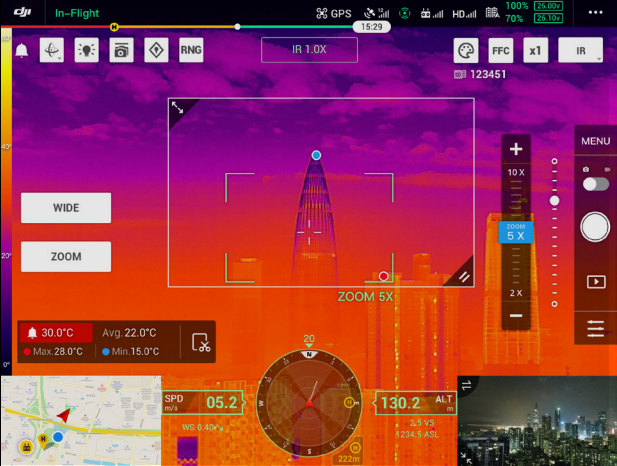
Visualize Temperatures Immediately

Monitor the temperature of a site or an asset to eliminate any risks by acquiring a precise temperature reading from the air.



Spot Meter

Tap a point to get a real-time reading of the surface temperature.



Area Measurement

Select an area to view the lowest, highest, and average temperatures.

Intelligent Features of the Thermal Camera



Temp Alarm

Receive instant notifications in DJI Pilot when object temperatures exceed your preset alert values.



Isotherms

Visualize a specific band of temperatures to find what is important.



Color Palettes

Adjust the colors applied to the thermal data based on the needs of specific scenarios.



Gain Modes

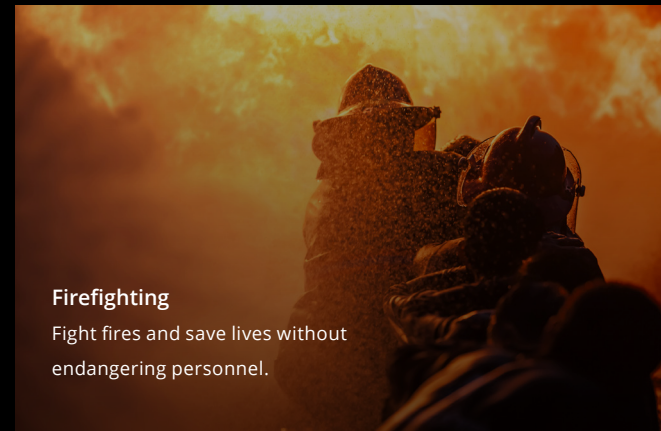
Adjust gain modes to change the temperature range captured: High Gain Mode covers a smaller temperature range but is more sensitive to temperature differences; Low Gain Mode covers a wider temperature range.



R-JPEG Images

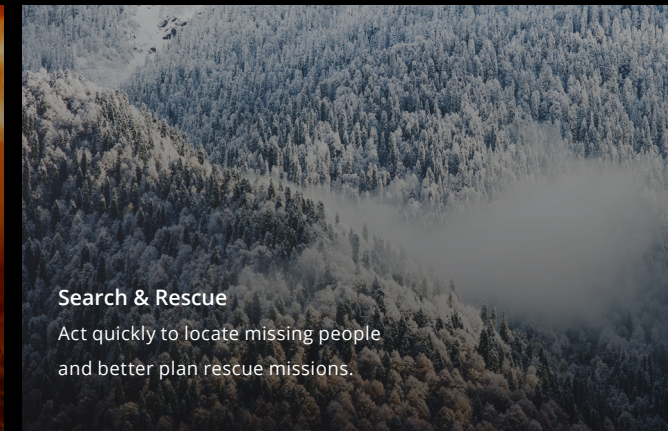
Images captured by the Zenmuse H20T are in the R-JPEG format with embedded temperature information. By importing these images into DJI Thermal Analysis Tool, you can measure temperature, and adjust parameters such as Emissivity, and Reflected Temp.

Applications



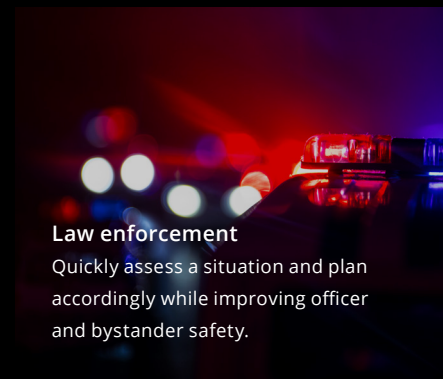
Firefighting

Fight fires and save lives without endangering personnel.



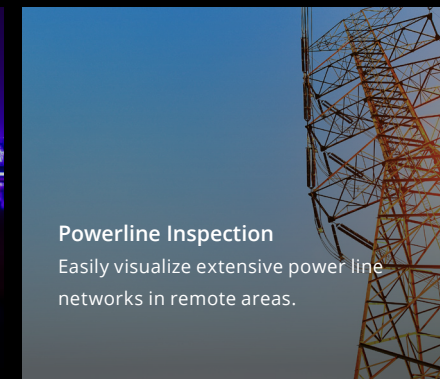
Search & Rescue

Act quickly to locate missing people and better plan rescue missions.



Law enforcement

Quickly assess a situation and plan accordingly while improving officer and bystander safety.



Powerline Inspection

Easily visualize extensive power line networks in remote areas.



Oil & Gas

Conduct inspections of pipelines, well sites and more – while keeping workers away from risky areas.

Specifications: General

	ZENMUSE H20	ZENMUSE H20T
Dimensions	150 × 114 × 151 mm	167 × 135 × 161 mm
Weight	678 ± 5 g	828 ± 5 g
Protection Rating	IP44	
Laser Safety	Class 1M (IEC 60825-1:2014)	
Supported Aircraft	Matrice 300 RTK	

Specifications: Gimbal

	ZENMUSE H20	ZENMUSE H20T
Angular Vibration Range	±0.01°	
Mount	Detachable	

Specifications: Zoom Camera

	ZENMUSE H20	ZENMUSE H20T
Sensor	1/1.7" CMOS, Effective Pixels: 20M	
Lens	Focal length	6.83-119.94 mm (equivalent: 31.7-556.2 mm)
	Aperture	f/2.8-f/11 (normal), f/1.6-f/11 (night)
	Focus	1 m to ∞ (wide), 8 m to ∞ (telephoto)

Specifications: Wide Camera

	ZENMUSE H20	ZENMUSE H20T
Sensor	1/2.3" CMOS, Effective Pixels: 12M	
Lens	DFOV	82.9°
	Focal length	4.5 mm (equivalent: 24 mm)
	Aperture	f/2.8
	Focus	1 m to ∞

Specifications: Thermal Camera

	ZENMUSE H20T	
Thermal Imager	Uncooled VOx Microbolometer	
Lens	DFOV	40.6°
	Focal length	13.5 mm (equivalent: 58 mm)
	Aperture	f/1.0
	Focus	5 m to ∞

Specifications: Laser Rangefinder

	ZENMUSE H20	ZENMUSE H20T
Wavelength	905 nm	
Measuring Range	3-1200 m (20% reflectivity, full spot)	
Measuring Accuracy	± (0.2 m + D×0.15%), D is the distance to a vertical surface	

Specifications: Storage

	ZENMUSE H20	ZENMUSE H20T
Supported SD Cards	Supports a microSD card with capacity of up to 128 GB. A UHS-I Speed Grade 3 rating microSD card is required.	
Supported File System	FAT32 (≤32 GB), exFAT (>32 GB)	

Specifications: Environment

	ZENMUSE H20	ZENMUSE H20T
Operating Temperature	-20°C to 50°C	
Storage Temperature	-20°C to 60°C	

*Please refer to the official product page for the latest specifications.