

Leica Geosystems Original Accessories Material matters



Catalogue 2023

leica-geosystems.com

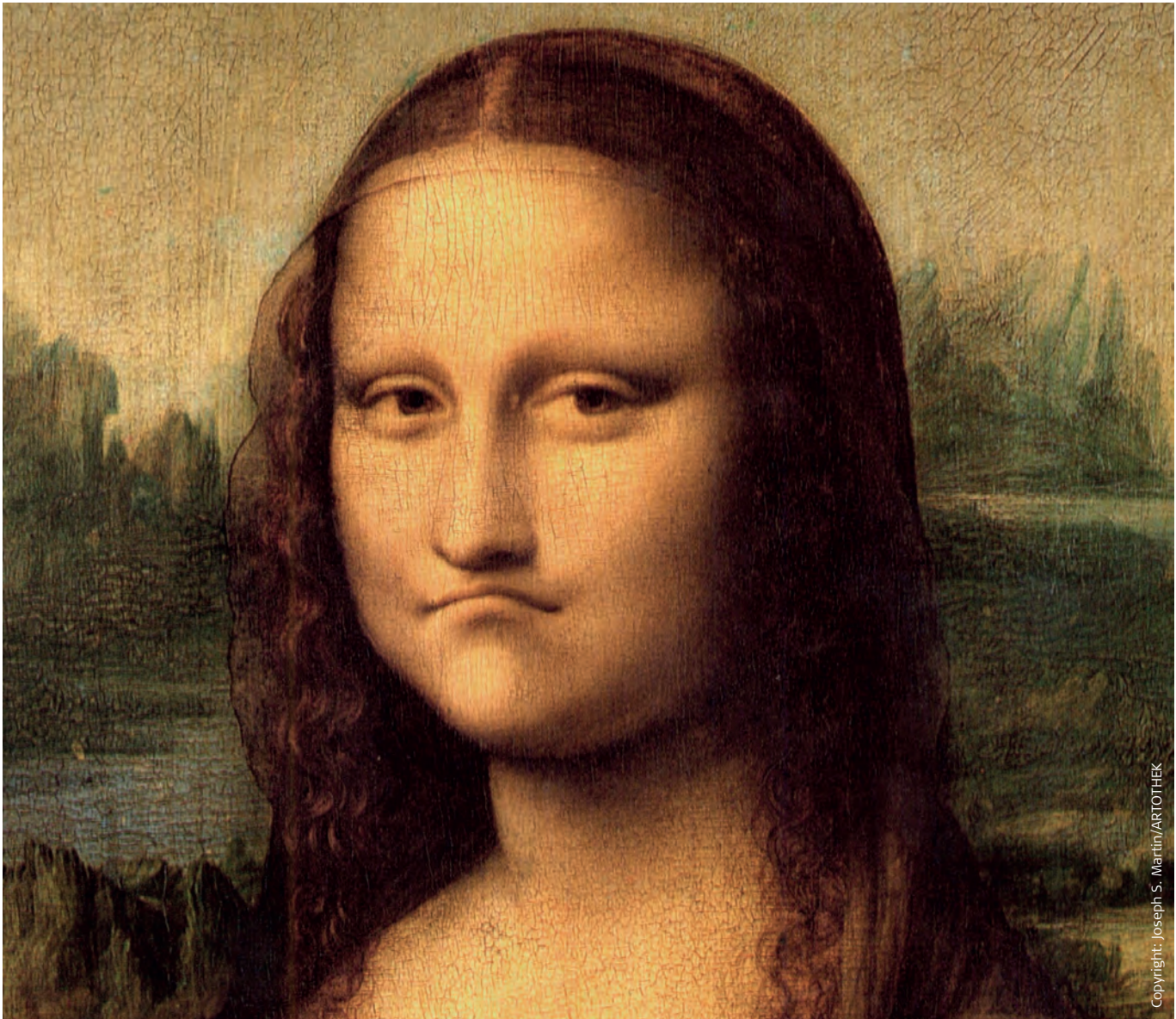


- when it has to be **right**

Leica
Geosystems

Unhappy with copies?

There is only one original!

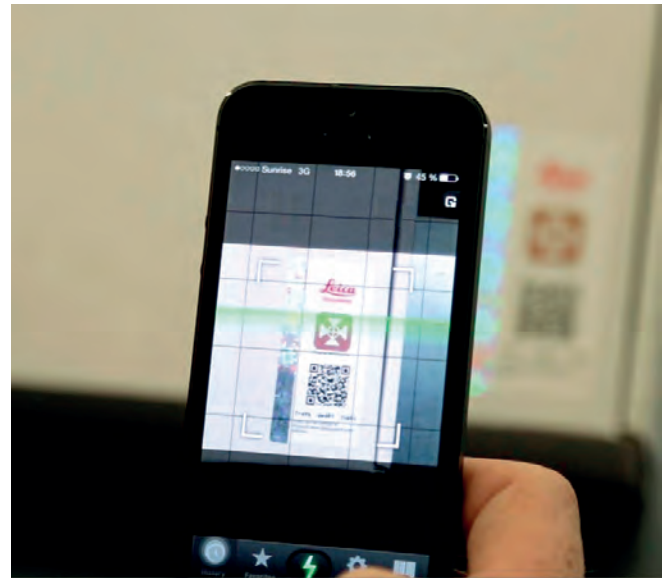


Copyright: Joseph S. Martin/ARTOTHEK

Benefit from the quality, precision and reliability of Leica Geosystems Original Accessories – perfectly suited for Leica Geosystems measuring equipment. You'll recognise Original Leica Geosystems Accessories by the security label with its unique code and colour-shifting logo, found on either the packaging or additional leaflet.

The genuineness of your accessory can be verified by entering the security code at www.myworld.leica-geosystems.com/validate or by scanning the QR code.

Verify the genuineness for your safety and benefit



Leica Geosystems Original Accessories now come with unique security codes that guarantee that what you bought is truly a part of the Leica Geosystems complete solution. No other accessories compare to those developed and produced by Leica Geosystems. Experience the optimal performance of your Leica Geosystems measuring equipment using

truly integrated accessories for optimised performance. If you place great importance on the accurate results and quality of your deliverables, make sure you know you are using the original. By validating your accessory security code, you will be 100 % sure you bought Leica Geosystems Original Accessories. And the excellent results you receive will convince you there is no substitution for the very best.



To be precise: Every detail counts

As far as the eye could see, there was nothing. Then came the survey professionals. Today an entire city district stands where earlier fields and meadows were. Measurement experts work as pioneers for the realisation of the visions and plans of others. The results of their work are essential. Their meaning lies in the truth upon which the others trust. It is with this consciousness that Leica Geosystems designs its instruments. It is from this standpoint that Leica Geosystems builds accessories that have been meticulously aligned to the instruments. Every detail counts, when visions are to become reality.



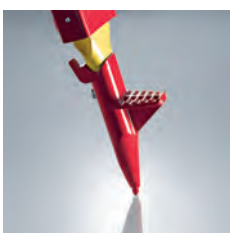
COMSA EMTE offers comprehensive services in railway infrastructures and has gained worldwide reputation. Jesús Gimeno Samperiz, survey project manager of the technical department at COMSA EMTE:

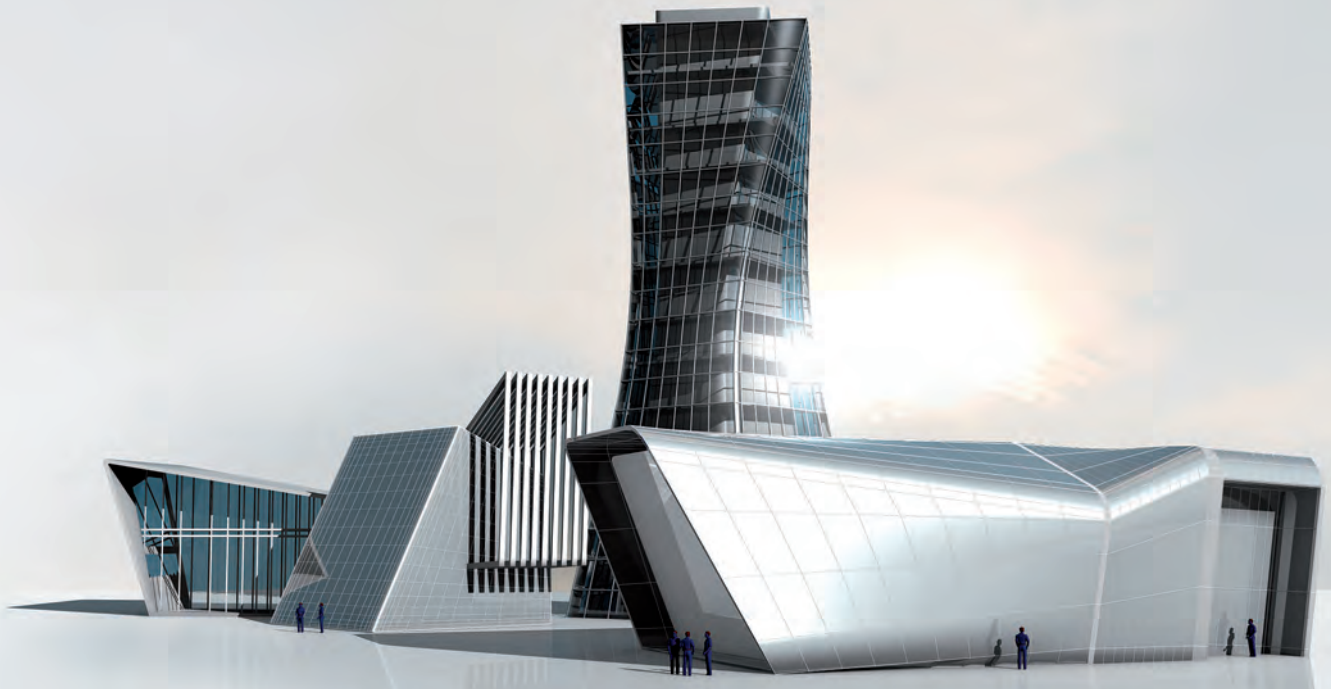
"In our working environment we use high-end surveying equipment. We would never compromise on quality. In order to achieve maximum performance of our measurement equipment, we are absolutely convinced that only the quality of original accessories can provide the required accuracy and reliability."



Mario Studer is manager of engineering surveying at BSF Swissphoto, a company of the internationally active Swissphoto Group. The thirty experts work in large projects such as airport, railway and tunnel measurements, deformation measurements

and naturally construction measurements. Mario Studer is convinced: "A very good measurement quality with precision instruments can only be achieved when the accessories fulfil the same quality criteria."





Valuable accessories for valuable results

The term “quality” is quickly and easily said, as long as one is not talking about concrete results. But it is only results that count: for the professional user, the measurement result. For Leica Geosystems, the satisfied customer. And that is over years and decades.

The quality of the original

For over 100 years, Leica Geosystems has given the term “quality” concrete substance. It covers not only the mechanical and optical quality of the accessories, but also, in the last decade increasingly important, the electronic quality with the criteria data integrity and data security. This comprehensive quality is the result of a unique process with clear guidelines and meticulous controls: starting with the qualifications of the supplier, to the testing, processing and refining of the materials, from the assembly of the components up to the tuning of the accessories to the instruments, and the accompanying tests for compliance to all specifications.

The precision of the original

Precision can only be defined as the accuracy of the instrument and accessory system as a whole. Speaking with the experience of the professional: “The best instrument is worth less when the accessory is not perfectly aligned to that instrument.” The value of the original can be recognised when accessories with descriptions such as “Leica-like” are offered. This honours us, but does not help our customers further,

because these products neither match the quality the customer expects from original Leica Geosystems accessories, nor are they as perfectly aligned to the Leica Geosystems instruments.

The reliability of the original

Just as the expert sometimes has to perform tasks in minus temperatures, so must his equipment always function smoothly, even in extreme conditions. And just as the technician works for many years, so should his equipment give him many long years of service, like the original accessories from Leica Geosystems.

The guarantee of the original

1. The exchange guarantee during the warranty period of one year means that you promptly receive a new, identical product or a repaired product, should your accessory exhibit manufacturing defects.
2. The replacement parts guarantee means that during the product's lifetime, and according to the accessory series (see pages 6/7), even after the discontinuation of a product, Leica Geosystems will have replacement parts available for you.

Transparent choice for your individual requirements



All our customers are experts in their fields. All have the need for professional accessories of outstanding quality. Many of them quite simply want "the best", and therefore the accessories of the "Professional 5000 Series". Based on their daily work and requirements, some make the products of the "Professional 3000 or 1000 Series" their choice. Whatever the case may be, it is a decision for quality.

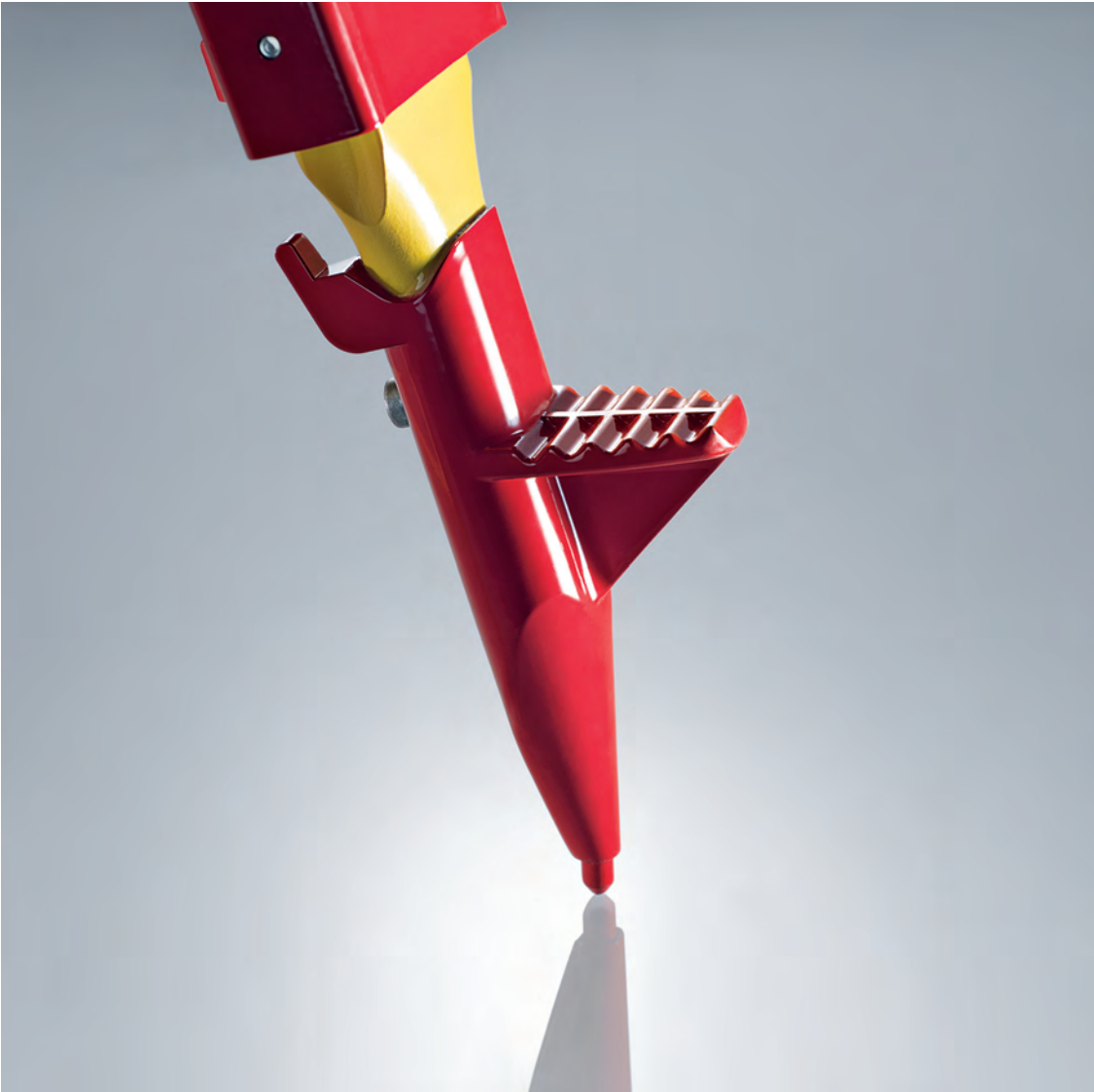
Three Original Accessory series for your benefit



Quality always remains quality. But not every user needs extremely low measurement tolerances or works under extraordinary climatic conditions. That is why Leica Geosystems offers its original accessories in three series for differing requirements. There is a lower limit, through which quality is defined. There is, however, no upper limit, because our customers' demand for maximum performance rises continually.

	PROFESSIONAL 5000	PROFESSIONAL 3000	PROFESSIONAL 1000
Price/ performance	The Professional 5000 Series meets the highest demands for precision, reliability, longevity and service.	The Professional 3000 Series meets high standards in exactness, function, consistency and service.	The Professional 1000 Series reliably fulfils all requirements of the most common surveying tasks.
Accuracy	You achieve the best possible measurement accuracy with these products. We recommend them for highest accuracy class instruments. ★★★★★	The Professional 3000 Series is conceived for all applications where a positioning accuracy of 3 mm and more is sufficient. ★★★	For applications with required position accuracy in 10 mm range. ★
Environmental specifications	For use even in extreme conditions of -20 to + 50 °C. ★★★★★	For use even in extreme conditions of -20 to + 50 °C. ★★★	For use only in normal to demanding conditions of -10 to + 40 °C. ★
Spare parts	All working parts remain available years after product is discontinued. ★★★★★	The most important working parts remain available years after product is discontinued. ★★★	Spare parts available only for selected products. ★
Lifetime	The chosen materials guarantee a maximum lifetime, even under the most extreme conditions. ★★★★★	The materials used provide a long lifetime, even under difficult conditions. ★★★	The material selection ensures a long lifetime under normal conditions. ★

Original tripods for stability



The most important criterion for a good tripod is its stability, quite explicitly, the torsional rigidity. With that, a very valuable, but not the only, argument for the original tripod from Leica Geosystems has been named. Other substantial benefits are the height stability under load and the minimal horizontal drift. Also not to be underestimated are advantages such as long life, optimal vibration dampening, water resistance, outstanding behaviour in solar radiation and their weight in relation to load-bearing capacity.

Transparent choice

The best tripod for your requirements

Leica Geosystems offers you a large selection of high-value tripods for all survey instruments and applications. The right tripod choice is decisive if the indicated accuracy of an instrument is to be reached. The classification "heavy duty" and "light duty" is widely based on ISO Norm 12858-2. They differ through the stability requirements and instrument weight.

PROFESSIONAL 5000



TRIPOD
HEAVY DUTY

- The Professional 5000 Series consists solely of heavy duty wooden tripods providing highest stability.
- Best height stability, maximum torsional rigidity and minimal horizontal drift over long time periods.
- Suitable for instruments up to 15 kg.
- Recommended for the highest angle accuracy of 3" and less.
- Due to vibration dampening characteristics of the carefully selected beech wood, this series is highly recommended for use with motorised TPS instruments.
- With its height stability, this series perfectly complements the LS15 digital level.

PROFESSIONAL 3000



TRIPOD
LIGHT DUTY

- The Professional 3000 Series consists of high value, light duty tripods.
- Suitable for instruments with weights of under 5 kg.
- Optimised for maximum lifetime in most difficult of operating conditions.
- Available in either wood or aluminium, according to application.
- GST05 wooden tripod suitable for non-motorised TPS instruments with angle accuracy from 5" to 7". Ideal tripod for mobile GNSS reference stations as well as static observations.
- GST05L aluminium tripod. Suitable for short-term prism stations on control points or as a light tripod for GNSS measurement campaigns.

PROFESSIONAL 1000



TRIPOD
UNIVERSAL

- The Professional 1000 Series consists of heavy and light tripods for demanding application conditions.
- The GST101 heavy wooden tripod is made from birch and proves itself for precise backsights and control points.
- The GST103 aluminium tripod is particularly suitable for automatic levelling as well as for prism stations with reduced accuracy requirements.

The stability of the original

Leica Geosystems tripods are manufactured solely from wood or aluminium. Wood, especially the beech and birch used by Leica Geosystems, offers the best stability values, measured on vertical movement and horizontal drift over time. Wood also exhibits optimal vibration characteristics and therefore delivers

substantial benefits, especially in the use of motorised TPS. The surfaces of the wooden tripods are sealed several times to prevent moisture absorption and to maximum longevity. Aluminium tripods are robust and save weight, their range of application is however limited.

Original tribrachs

Accuracy through torsional rigidity



Similarly to the stability of the tripod, that of the tribrach is a significant factor in measurement accuracy. The torsional rigidity, the most important criterion of a tribrach, is constantly controlled and tested during its production. The maintenance-free foot screws of the Leica Geosystems tribrach provide movement that is always smooth and free of play, even after years of use. The precise alignment of the support area to the base plate of the instrument assures extremely accurate forced centring. The optical plummet is so robust that the need for adjustment during the entire lifetime of the tribrach is practically unnecessary. Its construction predestines the tribrach for all applications, including extreme temperatures and high dust and humidity.

Transparent choice

The ideal tribrach for your application

All original tribrachs comply with the strict specifications and quality standards of Leica Geosystems. Your choice should ideally be made according to your individual accuracy requirements.

PROFESSIONAL 5000



GDF321
GDF322

- The hysteresis of the Professional 5000 Series tribrachs is guaranteed to a maximum of 1" (0.3 mgon) or better.
- The foot screws are maintenance-free and ensure a movement that is smooth and free of play, even in the most severe environmental conditions.
- The tribrachs in this series are recommended for all tasks that require angle measurements of under 3".
- Due to the minimal hysteresis, we recommend use of the Professional 5000 Series for all motorised instruments.

PROFESSIONAL 3000



GDF311
GDF312

- The hysteresis of the Professional 3000 Series tribrachs amounts to a maximum of 3" (1.0 mgon).
- The foot screws are maintenance-free and have a larger diameter. This allows for fine adjustments, even when wearing work gloves under difficult environmental conditions.
- These tribrachs are suitable for non-motorised TPS instruments with angle accuracy from 5" to 7" and GNSS antenna stations as well as backsights and control points.

PROFESSIONAL 1000



GDF301
GDF302

- The hysteresis of the Professional 1000 Series tribrachs amounts to a maximum of 5" (1.5 mgon).
- The GDF101 and GDF102 are cost effective tribrachs which prove themselves in use under normal environmental conditions.
- These tribrachs are suitable for non-motorised TPS instruments with angle accuracy of 7" and single frequency GNSS antenna stations.



The torsional rigidity of the original

The accuracy with which a tribrach returns to its starting position once the instrument has stopped, is called torsional rigidity or hysteresis. This hysteresis is the relative movement between the top plate and the base plate of a tribrach that occurs through the rotation of a TPS instrument. The hysteresis has direct influence on the angular accuracy of the instrument – and that speaks for the original. To optimise the hysteresis as Leica Geosystems has done is complex and calls for the highest precision: a movement of the top plate to the base plate of 0.3 μm corresponds to an angle error of 1". Especially motorised instruments with their high acceleration and brake power require tribrachs with very high torsional rigidity.

Original prisms

Maximum accuracy and range



The range of a prism results from, among other things, its coating and the glass geometry. A number of original prisms from Leica Geosystems have a special coating on the reflective surfaces – the anti-reflex coating, and a copper coating on the reverse side. Without the copper coating, the range of distance measuring, ATR and PowerSearch would be reduced by up to 30 %. The workmanship and the durability of the copper coating are decisive for a long life. The glass dimensions, the position in the holder and with it the spatial orientation, are important for measuring accuracy.

Leica Geosystems prisms are manufactured from glass of the highest quality and furnished with optical coatings so that even under the most extreme environmental conditions, a long lifetime and maximum range of the highest accuracy can be achieved.

Transparent choice

The optimal prism for your application

Leica Geosystems offers a transparent selection of prisms in various sizes for different areas of application.

PROFESSIONAL 5000



HIGHEST
ACCURACY

The prisms distinguish themselves through a centring accuracy of under 1 mm and the best possible beam deviation of $< 2''$ to achieve the maximum range.

■ Standard reflectors

For the most common applications. All prisms have an anti-reflex coating to provide highest longevity as well as to minimise measurement errors in close ranges.

■ Special reflectors

For highest precision with ingenious technology such as a precision metal housing, or those with carbon fibre strengthened prism axis.

■ Mini reflectors

High value, small format prisms for highest accuracy at close to medium range.

Centring accuracy

Measurement errors occur if original prism holders are not used. Substitutes are not configured according to Leica Geosystems criterion and often exhibit displacement between prism, holder and mounting stub.

Range

The beam deviation of a prism defines the maximum range. The smaller the beam deviation (measured in angular seconds), the greater the directly reflected signal strength to the sender optic.

PROFESSIONAL 3000



MAXIMUM
LIFETIME

Optimised for common operating distances, these prisms exhibit a beam deviation of up to $8''$. The special working of the optical coating, unique on the market, provides an above average lifetime.

■ Standard reflectors

All-rounder prism with integrated target plate for standard applications.

■ Special reflectors

Optimised for long-term monitoring applications. The special anti-condensation construction with a patented filter guarantees reliable measurement ranges in difficult weather conditions. Choice of high-precision reflective tapes.

■ Mini reflectors

Easy to handle and light to transport mini prisms.

Lifetime

In contrast to many conventional prisms, the reflective copper coating on the reverse side of original prisms consists of an adhesive coating, a copper coating, a protective coating and an overlying coat of lacquer. Working together, the copper coating and the lacquer increase the life of the prism significantly. An additional anti-reflex coating on the sensitive front surface provides a tough resistance to scratches.

Measurement accuracy

Measurement errors occur frequently at close ranges when prisms without anti-reflex coating are used, as the front of a prism always directly reflects a certain percentage of a signal.

PROFESSIONAL 1000



COST
EFFECTIVE
MEASURING

Despite its attractive cost-performance ratio, the Professional 1000 Series fulfils the strict Leica Geosystems process controls as well as users' high demands regarding lifetime.

■ Standard reflectors

Round prism with optional target plate.

■ Special reflectors

Optimised for monitoring applications with high demands on the relative measurement accuracy. Robust metal bracket for simple and flexible assembly.

Original data communication

Secure data storage and transfer



Losing data after a work-filled day is frustrating and expensive. The electronic accessories from Leica Geosystems comply with a higher standard than the commercially available accessories that meet consumer or even industry standards. The storage media and other data transfer products from Leica Geosystems are qualitatively of extremely high value and reliability.



Storage media

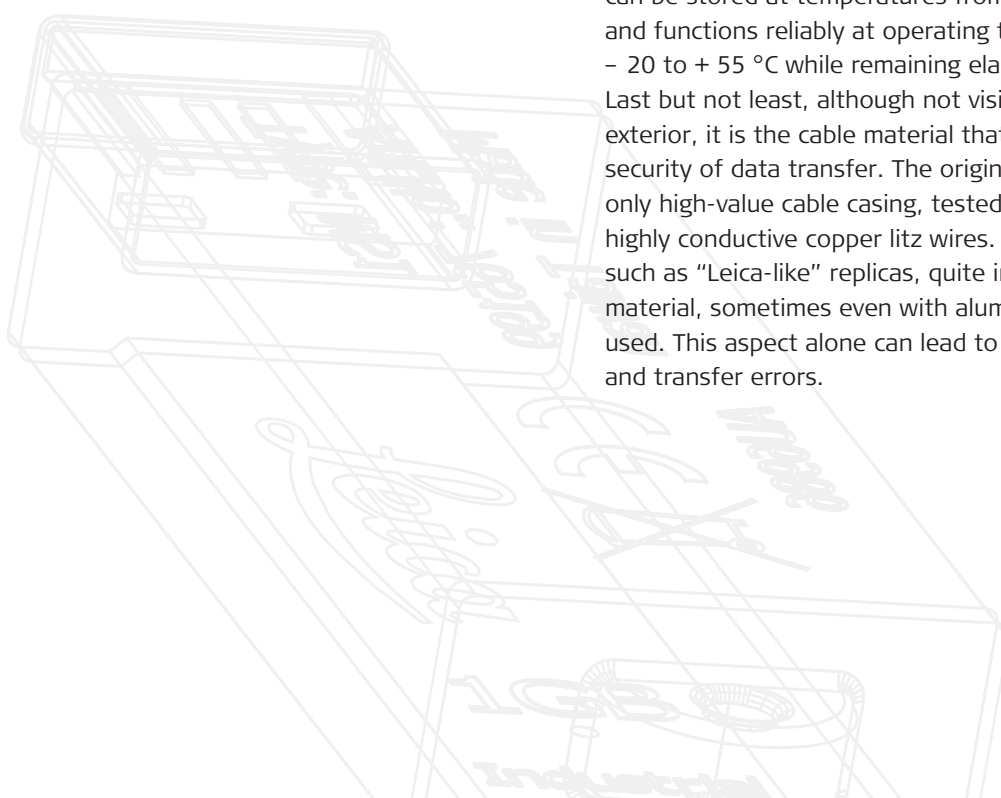
Leica Geosystems storage media are perfectly matched to Leica Geosystems instruments and sensors. Compared to conventional devices on the market, that read or write single data, these instruments have a different functional principle. The TPS or GNSS instruments create a database on the memory card and switch constantly between different open files. Standard memory cards are unable to manage this required multi-tasking function. This leads to problems in data communication and is one of the main causes of data loss. Furthermore, the original storage media also function with highest reliability in extreme temperatures, handling shock and high humidity.



Cable

The Leica Geosystems accessory program includes data transfer cables, power tension cables and antenna cables of the highest quality. For data transfer, Leica Geosystems offers serial and USB data cables. The data transfer over the cable from and to the instrument is therefore extremely reliable and secure, even in extreme heat, cold, snow and rain.

All Leica Geosystems cables are equipped with LEMO® plugs for outdoor use. The precision connections of recognised market leaders are found not only at Leica Geosystems, but also in other applications where similar quality demands are made, such as aviation, aerospace and medical technologies. A further significant quality component of the Leica Geosystems cable is its casing. It is constructed so that the cable can be stored at temperatures from – 40 to + 70 °C and functions reliably at operating temperatures from – 20 to + 55 °C while remaining elastic in handling. Last but not least, although not visible from the exterior, it is the cable material that determines the security of data transfer. The original cable contains only high-value cable casing, tested shielding and highly conductive copper litz wires. In other cables, such as “Leica-like” replicas, quite inferior value cable material, sometimes even with aluminium litz wires, is used. This aspect alone can lead to strong disturbances and transfer errors.



Original batteries and chargers

For reliable instrument function



At first glance, chargers and batteries do not seem to be important accessories. Perhaps they do not seem worth paying attention to for quality or origin. Experience shows the opposite. Instruments and their electronics react sensitively and need a reliable power supply in all environmental conditions. Batteries and chargers are also exposed to these conditions – some will function, others might and some not for long or not at all, under certain conditions. That is why the quality and efficiency of the originals also counts for batteries and chargers.

Transparent choice

Perfect batteries and chargers

Leica Geosystems offers you a wide range of high-value chargers and batteries. For chargers, you have the choice between the Professional 5000 Series with high functionality and intelligence and the Professional 3000 and 1000 Series, the cost-effective alternatives with less function, but outstanding quality and security.

PROFESSIONAL 5000



INTELLIGENT
CHARGER

- High-end charger, optimally designed for batteries used by Leica Geosystems.
- Intelligent battery recognition and controlled charging for longest battery service life.
- Charging and discharging cycles to refresh old cells.
- Intelligent trickle charging ensures that fully charged batteries are always ready for use.
- Through intelligent charging bay concept all Li-Ion batteries are fully backwards compatible.
- Charge up to 4 batteries overnight.

PROFESSIONAL 3000



MULTI-
FUNCTIONAL
CHARGER

- Cost effective mains power supply to charge one battery at a time.
- Built-in battery recognition for optimal charging.
- Includes car adapter cable.

PROFESSIONAL 1000



SIMPLE
CHARGER

- Can be directly plugged into CS field controller or docking station in order to charge batteries without removal.

The benefits of the originals

Chargers and batteries from Leica Geosystems are perfectly matched to each other and to the instruments, and reliably secure the power supply in the field. They achieve best values in regard to temperature tolerance, re-charging capability, operating time and cycle behaviour. Carefully and correctly handled, Leica Geosystems batteries achieve a maximum service life and are a guarantee that in decisive moments enough energy is available in the instrument, so that a measurement can be exactly and correctly completed.

Quality and safety requirements

- Only brand battery cells
- Integrated microchip for intelligent charging
- Integrated temperature sensor as protection against over-heating
- Integrated protection against short circuits
- Gold-coated contacts
- IP54 tested against rain and splash water
- Resilience against high mechanical influences
- Electronics protect against deep discharge and current peaks on charging, that could damage the batteries



Leica Geosystems Original Accessories Contents

Tripods	20
Tribrachs	22
Carriers	23
Standard reflectors	24
Special reflectors	25
Mini reflectors	26
Containers & bags	27
TPS poles	29
GNSS poles	30
AP20 poles	31
Accessories for poles	32
LS/DNA levelling staffs	34
Data storage	35
Radio accessories	36
Eyepieces	38
Chargers	39
Batteries	40
Cables	42

Tripods

PROFESSIONAL 5000



GST20, Wooden tripod

Heavy duty tripod with plumb bob, carrying strap and side clamp screws. Proven long-life, twist-proof and excellent vibration characteristics. Packaged length 110 cm (3.61 ft), extendible to 180 cm (5.91 ft), weight 6.4 kg (14.1 lb).

Order No: 296632



GST120-9, Wooden tripod

Heavy duty self-closing tripod with carrying strap and side clamp screws. Proven long-life, twist-proof and excellent vibration characteristics. Packaged length 110 cm (3.61 ft), extendible to 180 cm (5.91 ft), weight 6.4 kg (14.1 lb).

Order No: 667301



GST20-9, Wooden tripod

Heavy duty tripod with carrying strap and side clamp screws. Proven long-life, twist-proof and excellent vibration characteristics. Packaged length 110 cm (3.61 ft), extendible to 180 cm (5.91 ft), weight 6.4 kg (14.1 lb).

Order No: 394752



GST40, Wooden tripod

Heavy duty tripod with rigid legs, suitable for precision levelling. Proven long-life, twist-proof and excellent vibration characteristics. Length 170 cm (5.58 ft), weight 6.0 kg (13.2 lb).

Order No: 328422

PROFESSIONAL 3000



GST05, Wooden tripod

Light duty tripod with water-tight plastic wrap for complete protection. Suitable for TPS instruments with angular measurement accuracy starting from 5", reflectors and GNSS antennas. Packaged length 107 cm (3.51 ft), extendible to 176 cm (5.77 ft), weight 5.6 kg (12.3 lb).
Order No: 399244



GST05L, Aluminium tripod

Light duty tripod with shoulder strap. Light-weight and long lasting making it suitable for GNSS antennas, prisms and levels. Packaged length 107 cm (3.51 ft), extendible to 176 cm (5.77 ft), weight 4.6 kg (10.1 lb).
Order No: 563630

PROFESSIONAL 1000



GST101, Wooden tripod

Heavy duty tripod with carrying straps and side clamp screws. A cost effective alternative for TPS instruments with angular measurement accuracy starting from 5" and reflectors. Packaged length 104 cm (3.41 ft), extendible to 166 cm (5.45 ft), weight 5.7 kg (12.6 lb).
Order No: 726831



GST103, Aluminium tripod

Light tripod with carrying straps and side clamp screws. A cost effective alternative for levels, lasers and reflectors. Packaged length 105 cm (3.44 ft), extendible to 167 cm (5.48 ft), weight 4.5 kg (9.9 lb).
Order No: 726833

ACCESSORIES FOR TRIPODS



GST4, Tripod star

For the secure set-up of tripods on slippery surfaces.
Order No: 332200



GHT43, Tripod bracket

Adapter for mounting the TCPS radios on all tripods.
Order No: 734163



GHT58, Tripod bracket

Adapter for mounting the GFU radios on all tripods.
Order No: 748417

Tribrachs

PROFESSIONAL 5000



GDF321, Tribrach without plummet

High accuracy, maintenance free tribrach. Individually tested. Suitable for all high angular accuracy requirements.

Torsional stiffness < 1", weight 760 grams (1.72 lb).

Order No: 777508

PROFESSIONAL 3000



GDF311, Tribrach without plummet

Suitable for TPS instruments with an angular accuracy of greater than 3". The footscrews have a large diameter which permits fine adjustment even when wearing work gloves.

Torsional stiffness < 3", weight 800 grams (1.76 lb).

Order No: 842061

PROFESSIONAL 1000



GDF301, Tribrach without plummet

A cost effective tribrach suitable for use in normal environments. Suitable for all light-weight instruments of low angular accuracy. Black colour.

Torsional stiffness < 5", weight 800 grams (1.76 lb).

Order No: 842063



GDF322, Tribrach with optical plummet

High accuracy, maintenance free tribrach. Individually tested. The optical plummet is of robust construction, virtually eliminating the need for adjustment during the lifetime of the tribrach. Torsional stiffness < 1", weight 850 grams (1.90 lb).

Order No: 777509



GDF312, Tribrach with optical plummet

The tribrach and optical plummet are of robust construction and suitable for long period exposure in all environments. This makes the GDF312 ideal for GNSS and backsights and control points. Torsional stiffness < 3", weight 885 grams (1.95 lb).

Order No: 842062



GDF302, Tribrach with optical plummet

A cost effective tribrach with optical plummet for use in normal environments. Suitable for GNSS antennas.

Torsional stiffness < 5", weight 885 grams (1.95 lb).

Order No: 842064

ACCESSORIES FOR TRIBRACHS



GHM007, Height meter

For quick and easy instrument height measurement. The specially scaled tape, accurately displays the height to the centre of the TPS telescope or prism centre. The GHT196 holder is additionally required.

Order No: 667718



GHT196, Holder for height meter

For attachment of the GHM007 height meter to any Leica Geosystems tribrach.

Order No: 722045

Carriers

PROFESSIONAL 5000



SNLL321, Precision carrier with laser plummet

The laser provides convenient setting up even in conditions of poor visibility.

Reflector centring accuracy 0.3 mm, plummet accuracy 1.0 mm at 1.5 m.

Order No: 874838

PROFESSIONAL 3000



GRT144, Carrier with stub

Simple carrier for use in tribrachs with optical plummet. Suitable for reflectors with stub fitting.

Reflector centring accuracy 1.0 mm.

Order No: 667313



GRT146, Carrier with 5/8" thread

Simple carrier for use in tribrachs with optical plummet. For direct fitting of GNSS antennas.

Reflector centring accuracy 1.0 mm.

Order No: 667216



GZR3, Precision carrier with optical plummet

With high accuracy optical plummet and longitudinal bubble for exact positioning over measurement points.

Reflector centring accuracy 0.3 mm, plummet accuracy 0.5 mm at 1.5 m.

Order No: 428340



GZR103, Carrier with optical plummet

Rotatable carrier with longitudinal bubble for use in tribrachs without plummet.

Reflector centring accuracy 1.0 mm, plummet accuracy 0.5 mm at 1.5 m.

Order No: 725566



GRT247, Carrier with 5/8" thread for GS15

Simple carrier for use in tribrachs with optical plummet. For direct fitting of GS15 GNSS receiver.

Reflector centring accuracy 1.0 mm.

Order No: 770715

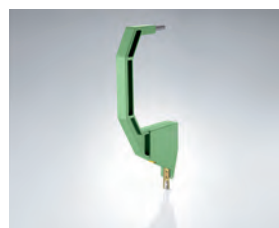
ACCESSORIES FOR CARRIERS



GAD31, Screw-to-stub adapter

For mounting of GNSS antennas to poles and carriers with stub.

Order No: 667217



GZS4, Height hook

Hook to precisely measure the height of GNSS antennas and reflectors. Connects to all Leica Geosystems GNSS carriers. With integrated tape measure in mm and inches.

Order No: 667244

Standard reflectors

PROFESSIONAL 5000



GPR121, Circular prism with holder

Precision circular prism with anti-reflex coating, mounted in metal holder. Supplied with removable target plate. Centring accuracy 1.0 mm, range 3,500 m (11,500 ft).

Order No: 641617



MPR122, 360° prism

The MPR122 is a high performance 360° prism with a rugged design. Small in size and light in weight, the built-in point allows the reflector to be positioned directly on a survey mark, at a height of 50 mm. Overall 3D pointing accuracy is 2.0 mm. ATR/ATRplus range of 600/1000 m (2,000/3,280ft). **Order No: 756637**

PROFESSIONAL 3000



GPR111, Circular prism with holder

Circular prism, sealed in red polymer holder. Large integrated target plate provides good visibility.

Centring accuracy 2.0 mm, range 2,500 m (8,200 ft).

Order No: 641618

PROFESSIONAL 1000



GRZ4, 360° prism

Suitable for all robotic TPS work performed with a survey pole. Overall 3D pointing accuracy of 5.0 mm. When aiming on a side marked by a yellow arrow, an accuracy of better than 2.0 mm can be achieved. ATR range of 1000 m (2,000 ft).

Order No: 639985



GRZ122, 360° prism

The high performance GRZ122 allows connectivity to the Leica SmartAntenna. The built-in point allows the reflector to be positioned directly on a survey mark, at a height of 78 mm. Overall 3D pointing accuracy is 2.0 mm. ATR range of 1000 m (2,000 ft).

Order No: 754384



GPR113, Circular prism with holder

Circular prism mounted in red polymer holder. Suitable for fitting of the 362823 GZT4 target plate.

Centring accuracy 2.0 mm, range 2,500 m (8,200 ft).

Order No: 753492

ACCESSORIES FOR STANDARD REFLECTORS



GPR1, Circular prism

Precision circular prism with anti-reflex coating. Suitable for mounting in GPH1 and GPH3 holders. Centring accuracy 1.0 mm, range 3,500 m (11,500 ft).

Order No: 362830



GPH3, Prism holder

Holder for three GPR1 circular prisms. Provides extremely long distance measuring range, up to 5,400 m (17,700 ft) with prism mode.

Order No: 400080



GPH1, Prism holder

Holder for one GPR1 circular prism. The 362823 GZT4 target plate can be attached to this holder.

Order No: 362820



GZT4, Target plate for GPH1

Target plate, mountable on the GPH1 and GPR113 prism holder.

Order No: 362823

Special reflectors

PROFESSIONAL 5000

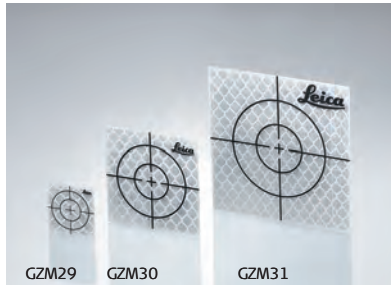


GPH1P, Precision prism

Precisely machined reflector, for high accuracy requirements. The prism diopter is slightly tilted to prevent any EDM reflection from the front surface, thereby increasing measurement accuracy. Centring accuracy 0.3 mm, range 3,500 m (11,500 ft).

Order No: 555631

PROFESSIONAL 3000



GZM29/30/31, Reflective tapes

Self-adhesive, reflective tapes supplied in pack of 20 pieces.

GZM29, 20 x 20 mm, for measurements up to 100 m (330 ft). **Order No: 763532**

GZM30, 40 x 40 mm, for measurements up to 200 m (650 ft). **Order No: 763533**

GZM31, 60 x 60 mm, for measurements up to 250 m (820 ft). **Order No: 763534**

PROFESSIONAL 1000



GPR105, Double sided reflector

This unique reflector provides two back-to-back prisms, both with 0-constant. With 1/4" fitting, suitable for mounting on GLS105 / 115 reflector poles or GAD105, range 250 m (820 ft).

Order No: 731346



GMP104, Monitoring mini prism

Mini monitoring prism with anti-reflex coating mounted in metal holder. Supplied with L-bar for fixed installations. The prism offset is dependant on the mounting position, range 2,000 m (6,600 ft).

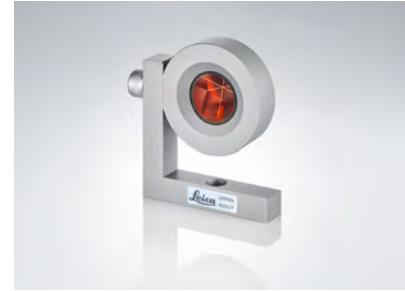
Order No: 641762



GPR112, Monitoring prism

Large diameter monitoring prism for long range measurements. For installation on M8 or 5/8" threaded bolts. Built-in filter prevents condensation on the backside of the prism. Rain / snow cover available separately, range 2,500 m (8,200 ft).

Order No: 726295



GMP004, Monitoring mini prism

Mini monitoring prism mounted in a metal holder. Supplied with L-bar for fixed installations. The prism offset is dependant on the mounting position, range 1,000 m (3,280 ft).

Order No: 962427

ACCESSORIES FOR GPR112



GHT112, Mounting set for GPR112

Mounting set for GPR112 with M8 and 5/8" internal thread adapters, suitable for direct fixing systems on nearly every surface, prism is adjustable and fixable in two axes. **Order No: 726296**



GDZ112, Rain shelter for GPR112

Rain shelter for monitoring prism GPR112. Full availability of the prism even in rainy and snowy conditions. The rain shelter protects the prism front against rain drops, snow and dust. **Order No: 727406**

Mini reflectors

PROFESSIONAL 5000



GMP101, Mini prism set

Mini prism mounted in metal holder. Includes a circular bubble, removable target plate, spike and padded bag. Prism constant of +17.5 mm, centring accuracy 1.0 mm, range 2,000 m (6,600 ft). **Order No: 641662**



GRZ101, 360° mini prism

Suitable for short range prism applications. Due to its small size, the GRZ101 provides the greatest pointing accuracy of 1.5 mm. With the GAD103 adapter, this reflector can be mounted on all poles with stub fitting. ATR range of 350 m (1,150 ft). **Order No: 644327**

PROFESSIONAL 3000



GMP111, Mini prism with holder

Mini prism mounted in polymer holder with 1/4" thread fittings. Includes circular bubble, GLS115 four-section pole and point. Prism constant of +17.5 mm, range 2,000 m (6,600 ft). **Order No: 641615**



GMP111-0, Mini prism with holder

Mini prism mounted in polymer holder with 1/4" thread fittings. Includes circular bubble, GLS115 four-section pole and point. Leica 0-prism constant, max. IR range of 2,000 m (6,600 ft). **Order No: 642534**

ACCESSORIES FOR MINI REFLECTORS



GAD103, Mini prism adaptor

Adapter for attaching the GRZ101 to poles and carriers with stub. Provides the same height offset as for standard reflectors. **Order No: 742006**



GAD105, Mini prism adaptor

Adapter for attaching the GMP111, GMP111-0 to poles and carriers with stub. Provides the same height offset as for standard reflectors. **Order No: 743503**



GMP112, Hidden point pole

Hidden point pole extension for GMP111. Includes mini reflector and 30 cm adapter pole. Provides prism separation of 40, 70 and 100 cm. **Order No: 742329**



GVP608, Soft bag

Bag for GMP111, GMP111-0, GRZ101 mini prisms and the GLS115 pole set. **Order No: 642344**

Containers & bags

HARD-TOP CASES



Sample picture

GVP738, Container for accessory

For 2 reflectors, 2 carriers, 2 tribrachs, GZT4 target plate, GHM007 height meter, AP20 and all CS field controllers / tablets, including attached holders. **Order No: 914930**

GVP750, Container for SmartPole and SmartStation

Hard container for SmartAntenna, CS field controller / tablet and accessories for a SmartPole and SmartStation setup.

Order No: 980899

GVP753, GNSS Rover Container

Small-sized hard container for SmartAntenna, CS10, CS15, CS20, CS30 field controller and accessories for a rover setup.

Order No: 980902

GVP752, Container for GS10/25 base

Hard container for GS10, GS25 receiver, CS field controller / tablet and accessories for a base or rover setup.

Order No: 980901

GVP751, Container for TS robotic setups

Small-sized hard container for 360° prism and CS10, CS15, CS20, CS30 field controller for TS robotic setup.

Order No: 980900

GVP754 GNSS Base+Rover Container

Hard container for 2 SmartAntennas, CS field controller and accessories for a base and rover setup.

Order No: 980903

BACKPACKS, BAGS



GVP703, Soft bag

Padded bag for accessories, controller, radios or CS30 tablet. **Order No: 790314**



GVP102, Soft bag for prism station

Soft bag with shoulder strap, for prism station, consist of tribrach, prism carrier or laser plummet and prism.

Order No: 727589



GVP647, Minipack for GNSS receiver

Minipack, for GS10 receiver, allows carrying GNSS Receiver and RTK Devices in a most ergonomic way on the back.

Order No: 770707

Containers & bags

ACCESSORIES FOR CONTAINERS



GVP716, Backpack carrying system

Easy-to-mount backpack system for carrying all large TPS and GNSS container including TS/MS60 containers.

Order No: 833516



GVP717, Sidebag for containers

Can be mounted to all new containers.
To hold additional accessories, CS35 tablet, laptop or documents.

Order No: 833517



GVP719, Shoulder strap

For carrying short distances. Fits to all new containers.

Order No: 833519



GVP718, Basic carrying system

Can be mounted to all new containers.

Order No: 833518



GDZ66, Back strap

Set of two back straps, for all containers with suitable mountings.
The container can still be opened while the straps are attached.

Order No: 744501

TPS poles

PROFESSIONAL 5000



GLS12, Telescopic pole

Pole with snap locks to prevent any pole slip. Suitable for the GRZ122 reflector together with GNSS antenna. Graduated in cm, min. length 1.39 m, extendible to 2.0 m, weight 950 grams.

Order No: 754391

GLS12F, Telescopic pole

Pole with snap locks to prevent any pole slip. Suitable for the GRZ122 reflector together with GNSS antenna. Graduated in ft, min. length 4.56 ft, extendible to 6.56 ft, weight 2.09 lb.

Order No: 754389



GLS14, Mini pole

Mini reflector pole for exact positioning of the reflector over a survey mark. Provides a prism height of 20 cm (0.66 ft). **Order No: 403427**

PROFESSIONAL 3000



GLS11, Telescopic pole

Reflector pole with quick release clamp for easy and rapid height adjustment. Graduated in cm and ft, min. length 1.24 m (4.07 ft), extendible to 2.15 m (7.05 ft), weight 940 g (2.07 lb).

Order No: 385500

GLS111, Telescopic pole

Heavy duty reflector pole with red/white markings for high visibility. Twist lock provides easy and secure tightening. Graduated in cm and ft, min. length 1.40 m (4.59 ft), extendible to 2.60 m (8.53 ft), weight 1.48 kg (3.26 lb).

Order No: 667309

GLS112, Telescopic pole

Heavy duty reflector pole with red/white markings for high visibility. Twist lock provides easy and secure tightening. Graduated in cm and ft, min. length 1.47 m (4.82 ft), extendible to 3.60 m (11.81 ft), weight 1.88 kg (4.14 lb).

Order No: 667310

PROFESSIONAL 1000



GLS101, Telescopic pole

Carbon / aluminium reflector pole with twist lock and pin lock to prevent any pole slip. Graduated in cm and ft. Min. length 1.31m, extendible to 2.3m, weight 1,230 g.

Order No: 865472



GLS115, Mini pole

Set of four screw-together sections and point with 1/4" threads. Suitable for GMP111, GRZ101 and GPR105 reflectors. Provides prism heights of 10, 40, 70, 100 or 130 cm. For prisms without bubble a additional clip on bubble is available (GLI115, 747895).

Order No: 642106

GNSS poles

PROFESSIONAL 5000



GLS30, Telescopic carbon fibre GNSS pole

Carbon fibre pole with snap lock at 2.00 m (6.56 ft) and 1.80 m (5.91 ft) for rapid setup. Min. length 1.36 m (4.46 ft), light weight at 700 g (1.55lb).

Order No: 752292

GLS31, Telescopic carbon fibre SmartPole

Carbon fibre pole with snap lock at 2.00 m, 1.80 m and 1.50 m for GRZ122 360° prism and GNSS antenna. Min. length 1.36 m (4.46 ft), light weight at 700 g (1.55 lb). **Order No: 766359**

PROFESSIONAL 3000



GLS12, Telescopic aluminium SmartPole

Pole with snap locks to prevent any pole slip. Suitable for the GRZ122 360° prism and GNSS antenna. Graduated in cm, min. length 1.39 m, extendible to 2.0 m, weight 950 g.

Order No: 754391

GLS13, Telescopic aluminium GNSS pole

Aluminium GNSS pole with 5/8" screw. Snap locks at 1.80 m and 2.00 m. Includes circular bubble. Min. length, 1.39 m. Weight 950 g.

Order No: 768226

PROFESSIONAL 1000



GLS102, Telescopic GNSS pole

Carbon / aluminium reflector pole with twist lock and pin lock to prevent any pole slip. Graduated in cm and ft. Min. length 1.39 m, extendible to 2.3 m, weight 1,290 g.

Order No: 865473

ACCESSORIES FOR GNSS POLES



GAD32, Telescopic rod

Telescopic rod with 5/8" screw. Fits in 667137 GVP603 backpack, for radio and GNSS antenna mounting. Can be secured on a tripod using the 667236 GHT36 adapter.

Order No: 667228

AP20 poles

CARBON FIBRE POLES



GLS51, Telescopic carbon fibre pole with stub for AP20

Telescopic carbon-fibre pole with stub interface, supports AP20 AutoPole. With circular bubble, twist lock and dedicated snap-lock positions. Minimum length 1,34 m, extendable to target height 2.20 m, printed scale on extendable and lower tube, graduation in cm.

Order No: 913901



GLS51F, Telescopic carbon fibre pole with stub for AP20

Telescopic carbon-fibre pole with stub interface, supports AP20 AutoPole. With circular bubble, twist lock and dedicated snap-lock positions. Minimum length 4,5 ft, extendable to target height 7.0 ft, printed scale on extendable and lower tube, graduation in ft.

Order No: 913902



GLS52 Carbon fibre pole extension 1 m

Carbon fibre pole extension. Diameter 32 mm to add at lower part on GLS30/31/51/51F, CRP1/2/3/4/5.

Order No: 977379



GLS53 mini pole for AP20 with 5/8"

Carbon fibre mini pole 25 cm with 5/8" to mount a MPR122 prism.

Order No: 977380

GLS54 mini pole for AP20 with Leica stub

Carbon fibre mini pole 24 cm with stub to mount a GRZ122 prism.

Order No: 979523

Accessories for poles

ACCESSORIES FOR TPS POLES AND GNSS POLES



GHT66, Holder for CS20 field controller

Adjustable holder for CS20 field controller.

Order No: 807157



GHT78, Holder for CS35 tablet

Adjustable holder for CS35 tablet.

Order No: 832127



GHT81, Holder for CS30 field tablet

Adjustable holder for CS30, CC170 field tablet.

Order No: 925664



GHT63, Poleclamp for field controller holder

Poleclamp to attach a holder GHT62, GHT66 or GHT78 to every telescopic pole.

Order No: 767880



GHT36, Base for telescopic rod on tripod

Base with 5/8 " screw, for setting up telescopic rod on tripod.

Order No: 667236



GHT70, Tripod holder for CS field controllers

For attaching a CS10, CS15, CS20 or CS35 field controller with its designated holder to a tripod.

Order No: 845832



GAD124 Topo Shoe for GLS30/31

Pin with screwable plate for attaching to a GLS30/31 for using on soft ground.

Order No: 876271

ACCESSORIES FOR TPS POLES AND GNSS POLES



GSR2, Dual strut support

With 2 telescopic legs, for rapid set-up of Ø 25 mm poles.

Order No: 555720



GSR111, Dual strut support

With 2 telescopic legs, for rapid set-up. Suitable for poles of all diameters.

Order No: 667319



GZW12, TPS pole extension

Extends all poles with stub fitting, by 1.00 m (3.28 ft).

Order No: 403428



GST6, Quickstand

With 3 telescopic legs, provides an extremely stable support for Ø 25 mm poles.

Order No: 560138

GLS18, GNSS pole extension

Extends all poles with 5/8" thread by 1.00 m (3.28 ft).

Order No: 667222

ACCESSORIES FOR EXT. ANTENNAS



GAD108, Arm for UHF / GSM antenna to GS15

Arm to mount external UHF/GSM antenna to GS15 SmartAntenna, useful in areas of poor radio or cellphone network reception. Gainflex UHF/GSM antenna fits on arm.

Order No: 767790



GAD33, Arm 15 cm for UHF/GSM antenna

Arm 15 cm long, attaches to GNSS antenna. Gainflex UHF/GSM antenna fits on arm. Antenna cable connects to arm.

Order No: 667219



GAD34, Arm 3 cm for UHF/GSM antenna

Arm 3 cm long, screws on telescopic rod with 5/8" screw. UHF/GSM antenna fits on arm. Antenna cable connects to arm.

Order No: 667220

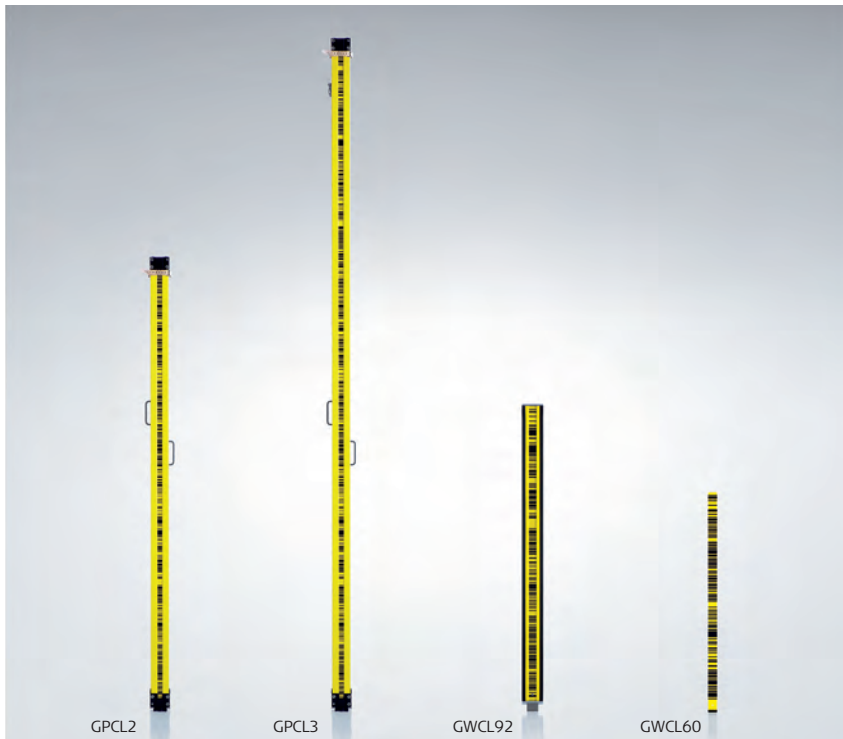


GAD46, Double arm for UHF/GSM antennas

Double arm adapter, screws on telescopic rod. Allows to connect up to 2 UHF/GSM antennas and up to 2 antenna cables on arm. **Order No: 734388**

LS/DNA levelling staffs

PROFESSIONAL 5000



GPCL2, Invar staff with bar code

Precision levelling staff with 2 circular bubbles. The two attached handles provide steady positioning. Length 2.0 m (5.56 ft), weight 4.2 kg (9.3 lb).
Order No: 563659

GPCL3, Invar staff with bar code

Precision levelling staff with 2 circular bubbles. The two attached handles provide steady positioning. Length 3.0 m (9.84 ft), weight 4.9 kg (10.8 lb).
Order No: 560271

GPCL3, Invar staff with certificate

Precision staff, individually measured for accuracy. Supplied with expansion co-efficient and length calibration certificate. Length 3.0 m (9.84 ft), weight 4.9 kg (10.8 lb).
Order No: 560274

GWCL92, Invar staff with bar code for industrial applications

Light-weight staff with circular bubble. Interchangeable edge or pin base, suitable for industrial applications. Length 92 cm (3.02 ft), weight 1.7 kg (3.7 lb).
Order No: 632313

GWCL60, Invar scale with bar code

Invar scale with screw holes allow for attachment directly to structures. Ideal for long-term height monitoring applications. Dimensions of 600 x 25 x 1.5 mm, for measuring range of 1.8 – 20 m (6 – 65 ft).
Order No: 563733

PROFESSIONAL 3000



GTL4M, Telescopic fibreglass staff

Four-section telescopic staff. Dual measuring faces with bar code and mm graduations. Incl. transport bag. Length 1.2 m (3.94 ft) to 4.0 m (13.12 ft), weight 2,2 kg (4.9 lb), coefficient of expansion 15 ppm/°C. **Order No: 757761**

GTL4C, Telescopic aluminium staff

Four-section telescopic staff. Dual measuring faces with bar code and mm graduations. Incl. transport bag. Length 1.2 m (3.94 ft) to 4.0 m (13.12 ft), weight 1.8 kg (4.0 lb), coefficient of expansion 24 ppm/°C. **Order No: 667113**

GKNL4M, Sectioned fibreglass staff

3 connectable sections. Dual measuring faces with bar code and cm graduations. With 2 handles and transport bag. Length 1.6 m to 4.0 m, weight 4.4 kg, coefficient of expansion 10 ppm/°C. **Order No: 522794**

GKNL4F, Sectioned fibreglass staff

Levelling staff in 3 connectable sections. Dual measuring faces with bar code and ft graduations. Incl. transport bag and 2 handles. Length 5.18 ft to 13.12 ft, weight 9.7 lb, coefficient of expansion 10 ppm/°C. **Order No: 522793**

Data storage

MEMORY CARDS AND CARD READERS



MSD1000, Industrial grade SD memory card 1 GB

Secure digital memory card. Capacity 1 GB. These rugged industrial grade cards protect data even when dropped and in extreme environmental conditions.

Order No: 767856



MSD08, Industrial grade SD memory card 8 GB

Secure digital memory card. Capacity 8 GB. These rugged industrial grade cards protect data even when dropped and in extreme environmental conditions.

Order No: 789139



MSD, Industrial grade Micro SD memory card 1 GB

Micro secure digital card. Capacity 1 GB. These rugged industrial grade cards protect data even when dropped and in extreme environmental conditions.

Order No: 795993



MCF256, Industrial grade CompactFlash card 256 MB

CompactFlash memory card. Capacity 256 MB. These rugged industrial grade cards protect data even when dropped and in extreme environmental conditions.

Order No: 733257



MCF1000, Industrial grade CompactFlash card 1 GB

CompactFlash memory card. Capacity 1 GB. These rugged industrial grade cards protect data even when dropped and in extreme environmental conditions.

Order No: 745995



MS1, Industrial grade USB memory stick 1 GB

Rugged USB stick in metal housing. Industrial grade with highest data security and reliability at extreme environmental conditions.

Order No: 765199



MCR7, USB card reader for SD and CF

OmniDrive card reader for SD and CF cards. Guaranteed secure data transfers with USB connection to all PC operating systems.

Order No: 767895

Radio accessories

ACCESSORIES FOR HPR RADIOS



GST74, Antenna mast including tripod

Aluminium tripod with a telescopic mast to extend the antenna height up to 5 m (16.5 ft). Includes a bag and suspension ropes with hooks.

Order No: 806098



GVP712, Container for HPR high power radio

Small black waterproof container. Holds a HPR radio and cables.

Order No: 806097



GVP711, Soft bag for battery

Soft bag which can hold a battery. Includes a cable kit with 2 SAE connectors to connect to GEV272 or GEV274 power cable.

Order No: 806096



GAD117, Adapter antenna to mast

Adapter for mounting the GAT23 or GAT24 antenna to the top of GST74. Includes 5 m (16.5 ft) cable.

Order No: 806101



GAT23, UHF antenna 430-450 Mhz

UHF whip antenna for 430-450 MHz frequency range, 5 db gain.

Order No: 806099



GAT24, UHF antenna 450-470 Mhz

UHF whip antenna for 450-470 MHz frequency range, 5 db gain.

Order No: 806100

ACCESSORIES FOR LEICA FIELD CONTROLLER AND TOTALSTATION



GDZ71, Stylus

Stylus for CS20 field controller.

Order No: 813914

GHT76, Tether

Tether to clip on a GDZ71.

Order No: 813582



GDZ80, Stylus

Stylus for CS30, CC170 tablet.

Order No: 925666



GDZ76, Digitiser pen

Digitiser pen for CS35 tablet.

Order No: 851539

ACCESSORIES FOR LEICA FIELD CONTROLLER AND TOTALSTATION



GHT68, Utility hook for CS20 field controller

Utility hook for attaching CS20 field controller to a tripod.

Order No: 807245



GHT67, Hand strap for CS20 field controller

Hand strap for CS20 field controller.

Order No: 807158



GHT77, Tether

Tether for a GDZ76.

Order No: 832122



GHT79, Hand strap

Hand strap for CS35 tablet.

Order No: 833343



GSK2, Raincover

Designed to fit on MS60 MultiStation and TS60 total station.

Order No: 944820



GSK3 Raincover

Designed to fit on TS16 I, TS16 P, TS13, iCR70, iCR80 and iCR80 S total stations.

Order No: 944821



SPF01, Screen protection foil for CS10/CS15

Order No: 767907

SPF03, Screen protection foil for TPS1200, TS12, TS30, TM30

Order No: 799658

SPF04, Screen protection foil

TS03, TS07, TS09+, TS11, TS12L, TS15, CS10, CS15, LS10/15, iCR60, iCB60, Builder 100-500

Order No: 799660

SPF05, Screen protection foil for CS20, TS10, TS13, TS16, TS60, MS60, iCR80, iCB50/70

Order No: 813781

SPF06, Screen protection foil for CS35

Order No: 832126

SPF10, Screen protection foil for CS30, CC170 tablet.

Order No: 925662

Each set contains 2 foils and a micro fibre cleaning cloth (except SPF06 and SPF10).

Eyepieces

DIAGONAL EYEPIECES AND ANCILLARY LENSES



GVO13, Solar filter

Attaches to the objective of all TPS instruments. Protects eyesight and EDM electronics when sighting bright objects.

Order No: 743504



GOA2, Autocollimation eyepiece

To perform autocollimation with any TPS instrument except TS02+.

The 394787 GEB62 plug-in lamp and 394792 GEB63 battery box are additionally required.

Order No: 199899



FOK53, Magnification eyepiece

Exchangable eyepiece for increasing telescope magnification to 42 x (Requires fitting by a Leica Geosystems Service Centre).

Order No: 377802



GSK1, Set cover for eyepiece and lens

Fits all TPS instruments.

Order No: 799220



GFZ3, Diagonal eyepiece

For comfortable observations of steep sights, up to the zenith. Fits all TPS instruments except TS02+.

Includes objective counterweight.

Order No: 793979

Chargers

PROFESSIONAL 5000



GKL341, Charging station

Intelligent charging ensures long battery life. Possible to charge up to 4 batteries simultaneously. GEB211/212/221/222/241/242/331/333/334/361/363/364/321. Includes country specific mains connection.

Order No: 799187



GKL260, Battery Charger

Easy-to-use, 4-bay charger for GEB260.

Order No: 926459

PROFESSIONAL 3000



GKL311, Battery charger

Easy-to-use, low cost charger for GEB211/212/221/222/241/242/331/333/334/361/363/364/321.

Includes car adapter cable.

Order No: 799185



GKL112, Battery charger

Simple, low-cost charger for GEB121 and GEB111 NiMh batteries. Includes car adapter cable.

Order No: 734753



GKL32, Battery charger

Charges one GEB371 or batteries with 5-pin charging socket.

Order No: 785703



GEV242, Battery charger

Charges one GEB371/373 battery.

Order No: 774437

GKL235, Battery charger

Charger for CS35 battery GEB235/236.

Order No: 832118

PROFESSIONAL 1000



AC/DC adapters for field controller

AC/DC-adapter, power supply for Field Controller.

GEV276, AC/DC adapter for CS20 field controller

Order No: 822787

GEV280-1, AC/DC adapter EU for CS35 tablet

Order No: 832113

GEV280-2, AC/DC adapter UK for CS35 tablet

Order No: 832114

GEV280-3, AC/DC adapter US for CS35 tablet

Order No: 832115

GEV280-4, AC/DC adapter AUS for CS35 tablet

Order No: 832116

GEV280-5, AC/DC adapter CH for CS35 tablet

Order No: 832117

GEV288, AC/DC adapter for CS30 tablet

Order No: 925661

Batteries

INTERNAL BATTERIES



GEB243, Li-Ion battery

High output battery for TS60/MS60 and TM60 instruments, 14.4 V / 6.4 Ah.
Order No: 971703



GEB223, Li-Ion battery

High output battery with extended capacity for all TS11/12/15/16 instruments, GS10 GNSS receiver, 7.2 V, 6.4 Ah.
Order No: 971702



GEB221, Li-Ion battery

High output battery for all TS02/06/09/11/12/15/16, GS10 GNSS receiver and Piper 100/200, 7.4 V / 4.4 Ah.
Order No: 733270



GEB212, Li-Ion battery

High output battery with extended capacity for CS10/CS15 field controllers and GNSS receivers, 7.4 V / 2.45 Ah.
Order No: 772806



GEB364, Li-Ion battery

High output battery for RTC and TS03/07/10 FlexLine instruments, 10.8 V / 6.9 Ah.
Order No: 954519



GEB334, Li-Ion battery

High output battery for CS20 field controller, GS18, LS, 10.8 V / 3.45 Ah.
Order No: 954518



GEB235, Li-Ion battery

Battery for CS35 tablet, 10.8 V / 4.1 Ah.
Order No: 832119



GEB236, Li-Ion battery

High output battery for CS35 tablet, 10.8 V / 8.7 Ah.
Order No: 832120



GEB321, Li-Ion battery

High output battery for AP20, 7.2 V / 3.35 Ah.
Order No: 898414



GEB260, Li-Ion battery

High output battery for CS30, 11 V / 3 Ah.
Order No: 925663



GEB111, NiMH battery

Low maintenance battery for TPS400/800 and DNA instruments, 6.0 V / 2.1 Ah.
Order No: 667318



GEB121, NiMH battery

Low maintenance battery for TPS400/800 and DNA instruments, 6.0 V / 4.2 Ah. Order No: 667123

EXTERNAL POWER SUPPLY



GEB373, External Li-Ion battery

High output battery for set-ups over long periods, 14.4 V / 289 Wh. Requires GEV242 for charging. With a GEV277 cable the battery can be used as UPS (uninterruptible power supply). Weight 2.3 kg.
Order No: 905305



GEV270, Power supply

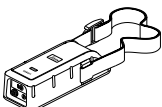
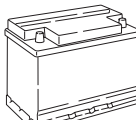
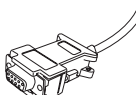
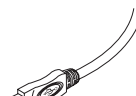


Mains adapter for uninterruptible power supply. Connects to all Leica Geosystems power cables. Country specific mains cable included. AC input 100 V – 240 V.
Order No: 807696



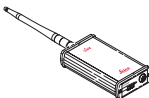
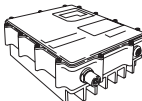
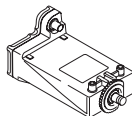

GEV71, Power cable

4 m cable for 12 V battery power supply. Protects the instrument from damage due to pole reversal and voltage peaks.
Order No: 439038

Cables

DEVICE	INSTRUMENT	ART.	SIGN	DESCRIPTION
GEB373 or GEV270 	TS02/06/09/11/12/15/16, LS	409678	GEV52	Power cable, 1.8 m, connects instrument to external battery
	GS10/25	560130	GEV97	Power cable, 1.8 m, connects instrument to external battery
	TM50/TS/MS60, Any GS, CS10*/15*/20	758469	GEV219	Power cable, 1.8 m, connects instrument to external battery
	GS10/25, GR10/25	733298	GEV172	Y-cable, 2.8 m, connects instrument with two external power supplies
	CS10/15/20, GS08plus/12/14/15	756365	GEV215	Y-cable, 2.0 m, connects instrument to external battery
	GS08plus/12/15	748418	GEV205	Y-cable, 1.8 m, connects instrument to external battery
	GS14	796492	GEV264	Y-cable, 1.8 m, connects instrument to GFU and battery
	TM50/TS/MS60	793364	GEV261	Y-cable, 1.8 m, connects instrument to PC and battery
12 V car battery 	All instruments	439038	GEV71	Car battery cable, 4 m, connects all power cables to 12 V car battery
PC-RS232 port 	TS02/06/09/11/12/15/16, LS	563625	GEV102	Data cable, 2 m, connects instrument to PC (RS232)
	TS02/06/09/11/12/15/16, DNA	734698	GEV187	Y-cable, 2 m, connects instrument to PC and battery
	GS10/15/25, GR10/25	733280	GEV160	Data cable, 2.8 m, connects instrument port 2 to PC (RS232)
	TM50/TS/MS60, GS10/15, CS10*/15*/20	733282	GEV162	Data cable, 2.8 m, connects instrument to PC (RS232)
	GFU	733297	GEV171	Y-program cable, 1.8 m, for the Sateline radio modem inside the GFU housing
	SLR	767803	GEV231	Program adapter cable, 1.8 m, for SLR radios
	TM50/TS/MS60, GS10/15	759257	GEV220	Y-cable, 1.8 m, connects instrument to RS232 and battery
	TM50/TS/MS60, Any GS	793364	GEV261	Y-cable, 1.8 m, connects instrument to PC and battery
PC-USB port 	TS02/06/09/11/12/15/16, LS	806093	GEV267	Serial data transfer cable, 2 m, TS/TPS/LS LEMO® to USB
	GS10/15/25, GR10/25	806094	GEV268	Serial data transfer cable, 2 m, connects instrument port 2 to PC
	TM50/TS/MS60, GS10/14/15, CS10/15/20/25	806095	GEV269	Serial data transfer cable, 2 m, connects instrument to USB
	Any GS, CS10/15/20	767899	GEV234	USB data cable, 1.65 m, connects CS to GS or CS to PC (USB)
	TS02/06/09, CS10**/15**, GS25	764700	GEV223	USB data cable, 1.8 m, connects instrument with Mini-USB to USB
	TM50/TS/MS60, GS10/14/15	793364	GEV261	Y-cable, 1.8 m, connects instrument to PC and battery
CS10/15/20 	TS12/15/16	756367	GEV217	Data transfer cable, 1.8 m, connects CS10/15/20 to TS12/15/16
	Any GS	767899	GEV234	USB data cable, 1.65 m, connects CS to GS or CS to PC (USB)
	TM50/TS/MS60, Any GS	772807	GEV237	USB data cable, 1.65 m, connects instrument to CS10*/15*/20
External antenna 	GS05/06, CGR10/15	772002	GEV238	Antenna cable, 1.2 m
<p>* with LEMO® connector module ** with DSUB / Mini USB connector module</p>				

Cables

DEVICE	INSTRUMENT	ART.	SIGN	DESCRIPTION
TCPS	TM50/TS/MS60 TS11/12/15/16	771057	GEV236	Y-cable, 1.8 m, connects instrument to TCPS and battery
		734697	GEV186	Y-cable, 1.8 m, connects instrument to TCPS and battery
				
Satelline 3AS w/o housing	GS10/15/25	639968	GEV125	Data transfer cable, 1.8 m, connects Satelline radio w/o housing
				
Satelline 3AS HPR (35W)	GS10/14/15, GR10/25	817713	GEV275	Connects Satelline to instrument, for GS08plus a GEV205 is additionally required
	GS10/14/15, GR10/25	811818	GEV274	Y-cable, 2.8 m, connects Satelline to instrument and SAE adapter
	GVP711	809028	GEV272	Cable for power connection with SAE adapter to GVP711 battery bag
	PC RS232	809029	GEV273	Programming cable RS232
GFU modem	GS15	748418	GEV205	Y-cable, 1.8 m, connects instrument to GFU and battery
	GS15	767898	GEV233	Data cable, 0.8 m, connects instrument to GFU
	GS15	767897	GEV232	Data cable, 2.8 m, connects instrument to GFU
	GS14	796492	GEV264	Y-cable, 1.8 m, connects instrument to GFU and battery
				
External modem	GS10/15/25, GR10/25	563809	GEV113	Data cable, 2.8 m, connects instrument port 2 to modem
PPS/Event	GS25/GR25	667744	GEV150	PPS output cable, 2 m
	GS25/GR25	403448	GEV42	PPS event in, 2 m
	GS25/GR25	789061	GEV262	Event cable with LEMO® connector
External GNSS antenna*	GS/GR	667200	GEV141	Antenna cable, 1.2 m
	GS/GR	724969	GEV194	Antenna cable, 1.8 m
	GS/GR	636959	GEV120	Antenna cable, 2.8 m
	GS/GR	632372	GEV119	Antenna cable, 10 m
	GS/GR	667201	GEV142	Extension antenna cable, 1.6 m
				
* or external Gainflex UHF/GSM radio ant.				

Accessories overview

TRIPODS					
TPS	1"	2"	3"	5"	7"
Motorised					
TPS setup or traversing with forced centring	GST20 GST20-9 GST120-9	GST20 GST20-9 GST120-9	GST20 GST20-9 GST120-9	GST101	
Manual					
TPS setup or traversing with forced centring	GST20 GST20-9 GST120-9	GST20 GST20-9 GST120-9	GST20 GST20-9 GST120-9	GST05 GST101	GST05 GST101
Prism setups on control points	GST101	GST101	GST101	GST05 GST05L	GST05L GST103
GNSS	Static GST05			Kinematic GST05L	
Levels	LS GST40 GST20 GST20-9 GST120-9			Automatic GST103	

TRIBRACHS					
TPS	1"	2"	3"	5"	7"
Motorised					
TPS setup or traversing with forced centring	GDF321 GDF322	GDF321 GDF322	GDF321 GDF322	GDF321 GDF322	
Manual					
TPS setup or traversing with forced centring	GDF321 GDF322	GDF321 GDF322	GDF321 GDF322	GDF311 GDF312	GDF301 GDF302
Prism setups on control points	GDF311 GDF312	GDF311 GDF312	GDF311 GDF312	GDF301 GDF302	GDF301 GDF302

PRISMS				
	Model	Centring accuracy	Prisms constant	Anti-reflex-coating
Professional 5000				
Standard reflectors	GPR121	1.0 mm	0	yes
	GPR1+GPH1	1.0 mm	0	yes
	GRZ4	2.0 mm	+23.1 mm	no
Special reflectors	GPH1P	0.3 mm	0	no (tilted)
	GRZ122	2.0 mm	+23.1 mm	no
	MPR122	2.0 mm	+28.1 mm	no
	GMP104	*	+8.9 mm	yes
Mini reflectors	GMP101	1.0 mm	+17.5 mm	no
	GRZ101	1.5 mm	+30 mm	no
Professional 3000				
Standard reflectors	GPR111	2.0 mm	0	no
Special reflectors	GPR112	*	-7.1 mm	no
Mini reflectors	GMP111	2.0 mm	+17.5 mm	no
	GMP111-0	2.0 mm	0	no
Professional 1000				
Standard reflectors	GPR113	2.0 mm	0	no
Special reflectors	GMP004	*	+8.9 mm	no

* Due to flexible mounting mechanisms no centring accuracy can be specified for monitoring prisms.



Perfect compatibility of the accessories

Leica Geosystems instruments and Leica Geosystems accessories are perfectly aligned to each other and constitute a finely tuned package. In order to achieve the individually required accuracy, it is always necessary to consider the accuracy of the instrument and accessory system as a whole.

Transparent choice for your individual requirements

On the table overleaf you will find an overview of Leica Geosystems instruments and the accessories recommended for them. Please consider our recommendations when selecting your tripod, tribrach and prisms, as well as electric and electronic accessories.



The table can be simply folded out. It is then always visible as the product pages and product descriptions are reviewed, helping to make your selection easier.



Leica Geosystems – when it has to be right

With more than 200 years of history, Leica Geosystems, part of Hexagon, is the trusted supplier of premium sensors, software and services. Delivering value every day to professionals in surveying, construction, infrastructure, mining, mapping and other geospatial content-dependent industries, Leica Geosystems leads the industry with innovative solutions to empower our autonomous future.

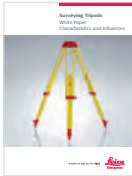
Hexagon (Nasdaq Stockholm: HEXA B) has approximately 24,000 employees in 50 countries and net sales of approximately 5.2bn EUR. Learn more at hexagon.com and follow us @HexagonAB.



Copyright Leica Geosystems AG, 9435 Heerbrugg, Switzerland. All rights reserved.
Leica Geosystems AG is part of Hexagon AB. 782501en – 2023

Laser plummet:
Laser class 2 in accordance with IEC 60825-1 resp. EN 60825-1

The **Bluetooth®** word mark and logos are owned by Bluetooth SIG, Inc. and any use of such marks by Leica Geosystems AG is under license. Other trademarks and trade names are those of their respective owners.



Surveying Tripods
White Paper



Surveying Tribachs
White Paper



Surveying Reflectors
White Paper



Batteries & Chargers
White Paper



Storage Media & Card Reader
White Paper

Detailed information about original Leica accessories and more documents can be found at <https://leica-geosystems.com/products/total-stations/accessories>