



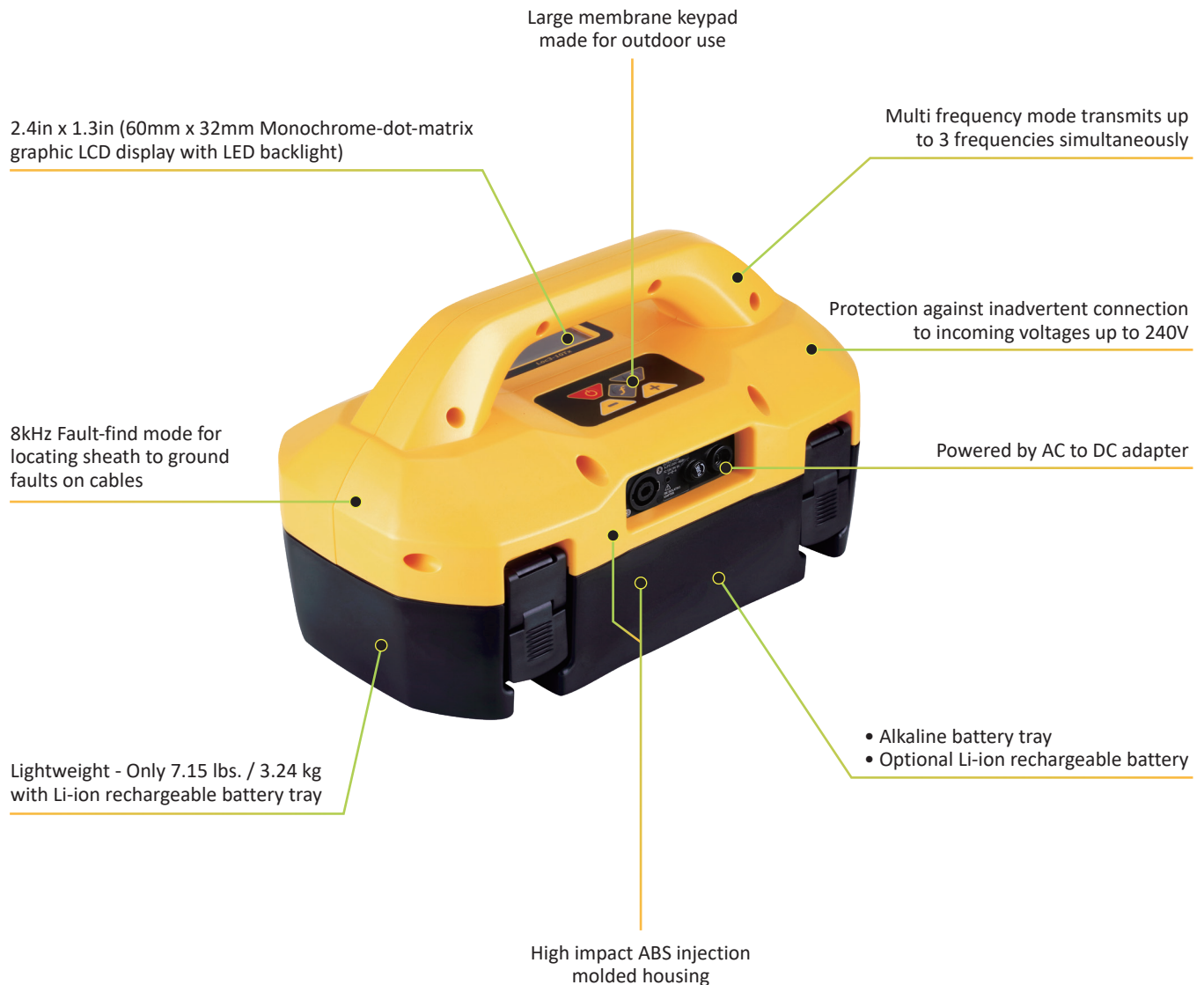
# Loc3 Series Transmitters

- Built-in AVO meter
- AC/DC external power sources
- Multi-frequency transmitting
- Use with Li-ion or alkaline batteries
- Fault-find and ELF frequencies\*
- SD mode for positive location in congested areas

**The Loc3 series** broadband transmitters have selectable induction and direct connection frequencies from 98Hz to 200kHz, positive identification modes, fault find and true resistance measurement up to 1 Mohm. The two-inch by one-inch dot matrix display with LED backlight shows output current, connection type, volts, resistance, frequency, volume, battery condition and high-voltage warnings.

The Loc3 series is designed to withstand the rigors of your work environment. Packaged in a lightweight, rugged, ergonomic IP54 housing, the transmitter ensures consistent current output in direct connect, clamp or induction modes. It also provides protection against inadvertent connection to incoming voltages up to 240V, ensuring your safety.

\* Not available on all models.



	Induction	Direct Connection	Clamp
<b>5-Watt</b>	98Hz to 200kHz	98Hz to 200kHz	8kHz to 131kHz
<b>10-Watt</b>	98Hz to 200kHz	98Hz to 200kHz	8kHz to 131kHz
<b>25-Watt</b>	-	32Hz to 9.82kHz +ELF	-
All models include SD mode			
All models include fault-find frequencies			
Signal Select frequencies available in the 10-watt model			

Output Power	Alkaline	Li-ion
<b>1-Watt</b>	25 hours	50 hours
<b>5-Watt</b>	6 hours	10 hours
<b>10-Watt</b>	4 hours	6 hours
<b>25-Watt</b>	N/A	4 hours
Li-ion batteries will withstand over 500 charging life cycles		
At 70°F (21°C) - continuous use (based on the battery type and quality)		

Loc3 Series Transmitters Specifications	
<b>Construction</b>	High-impact ABS injection molded housing.
<b>Dimensions</b>	13.1in(L) x 7.2in(W) x7.3in(H) (332mm x 182mm x 185mm).
<b>Display</b>	2.4in x 1.3in (60mm x 32mm) Monochrome-dot-matrix graphic LCD display with LED backlight.
<b>Battery options</b>	5 and 10-Watt are supplied with Alkaline batteries, The 25-Watt is supplied with Li-ion battery tray. The Li-ion rechargeable battery tray is an option for the 5 and 10-watt transmitters.
<b>Transmitting modes</b>	<b>Induction mode</b> - applies signal inductively using internal antenna (except 25-Watt) <b>Direct connection mode</b> - applies signal directly to the cable by clipping one output lead to the cable, the other to an independent ground. <b>Clamp mode</b> - applies signal using an inductive clamp (aka toroid or coupler) that is placed around the target pipe or cable.
<b>Environmental</b>	IP54 and NEMA 4

## What's in the box



Transmitter



Alkaline battery tray



Direct connection lead



USB Lead

\*The 25-Watt transmitter comes in a carry bag with Li-ion battery as standard.

## Popular Accessories



Backpack



Rechargeable battery



Carry bag



Clamps



Live plug connector



Live cable connector

Local Vivax-Metrotech Distributor:

### Vivax-Metrotech Corporation

3251 Olcott Street, Santa Clara, CA 95054, USA

**T/Free: 1-800-446-3392**

**Tel: +1-408-734-3880**

www.vivax-metrotech.com

CONNECT WITH US ON SOCIAL MEDIA



V1.0

Please visit our website for full product specifications.




# MyLocator3 Data and Locator Management Apps





- Manage the locator and its data
- Automatic firmware updates
- Calibration verification
- Limit the use of modes or frequencies
- Add a custom start screen

Manage a single locator or a fleet of vLoc3 series receivers and Loc3 series transmitters with the MyLocator3 data management apps. With this free app, it is easy to keep the firmware of the vLoc3 series of receivers up to date with the latest features. These management tools allow the user to configure the features in the locator, download data collected from locating, and set alarms usable while locating.


Configure locators by turning on or off features, selecting which frequencies the user has access to, and creating custom startup screens. When the locator is connected to a computer running the data management app, the program will automatically search our database for the latest software for both the utility locator and desktop application. The locator connects to the computer running the data management app by the supplied mini-USB cable.

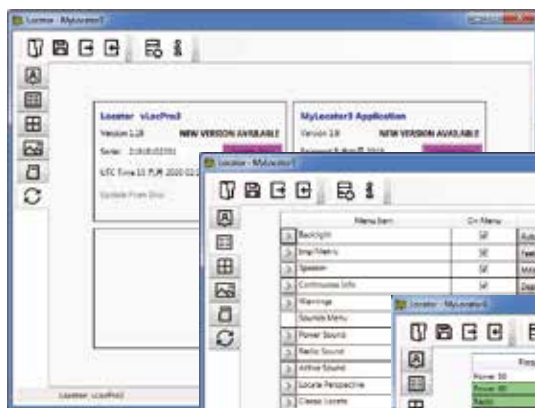
 **Data Transfer** - Download the data collected from the locator, including timestamped GPS coordinates, depth measurements, current on the line, and notes entered at the time of locating. Data can be exported in csv, kml, shp, xls, or xlsx formats.

 **Software & Firmware Updates** - The MyLocator3 app automatically checks for app updates and locator firmware updates whenever connected to the internet.


 **Self-test and Calibration Verification** - All self-test results are automatically sent to the data management app. When the locator passes the self-test, a calibration certificate will be available for download in the data management apps.

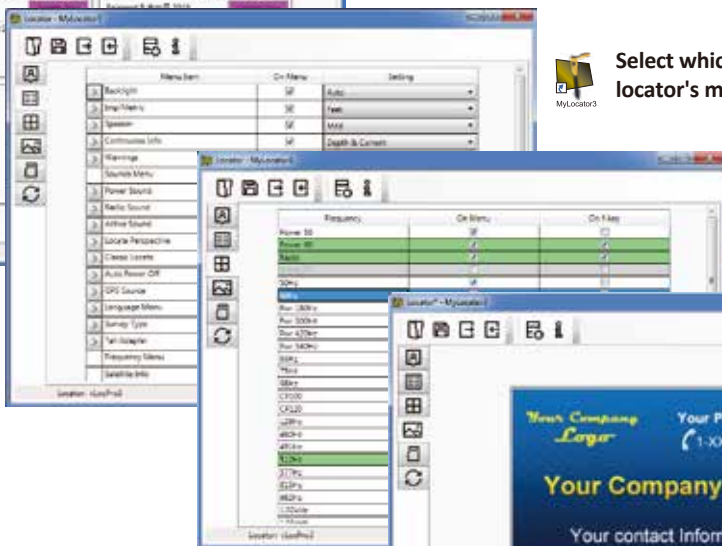
 **Personalize** - Add owner or user information, a background picture or logo, or a short message to the startup screen.


 **Lock Out** - The locator configurations and settings can be locked, enabling equipment or safety officers to ensure that the user cannot override features selected or removed by management. (Requires optional lockout dongle)




 The software and locator firmware updates are shown whenever connected to the internet.

 Select which menu options will appear in the locator's menu.



 Select the modes and frequencies for the receiver and transmitter.

 Add a custom start screen to the locator.



## Data Management App System Requirements and Specifications

<b>Operating System</b>	Microsoft Windows 10 version 1809 or later
<b>Minimum CPU or processor speed</b>	One gigahertz (GHz) or faster processor or System on a Chip (SoC)
<b>Graphics card</b>	DirectX 9 or later with WDDM 1.0 driver
<b>Minimum system memory (RAM)</b>	1 Gigabyte (GB) for 32-bit Microsoft Windows or 2 GB for 64-bit Microsoft Windows
<b>Minimum free storage space</b>	100 megabytes (MB)
<b>PC Peripherals</b>	USB 2.0 port (or later)
<b>Internet Connection</b>	Internet connectivity is necessary to perform updates and to download and take advantage of some features.
<b>Compatibility</b>	vLoc3 series receivers: Pro, ML, DM, RTK, 5000, 9800, XLF, Cam Loc3 series transmitters: 5-watt, 10-watt, 25-watt

## Compatibility



Local Vivax-Metrotech Distributor:

### Vivax-Metrotech Corporation

3251 Olcott Street, Santa Clara, CA 95054, USA

**T/Free: 1-800-446-3392**

**Tel: +1-408-734-3880**

www.vivax-metrotech.com

Tag us on social media @vivax\_metrotech



V1.2

Please visit our website for full product specifications.